

34466 – RECEIVED AND PLACED ON FILE

Our Path Forward, Strategic Framework



Economic Responsiveness:

The Chicago Roadmap: Pathway to Employment and Economic Mobility

Presentation to the City Colleges Board of Trustees
April 7, 2022

Mark Potter, Provost

Peggy Korellis, Vice Chancellor of High School Strategy and Educational Quality



Vision

To be recognized as the city's most accessible higher education engine of socioeconomic mobility and racial equity – empowering all Chicagoans to take part in building a stronger and more just city.

Levers



Create an **exceptional student experience**



Become a “student-ready” **equitable institution**



Develop and strengthen pathways that are **responsive** to the economic needs of the City



Build a **culture of excellence**



Create a **collaborative and connected** ecosystem



Monitor and ensure financial sustainability and the overall **health** of our institution



Economic Responsiveness

Goal: We will be forward-looking and agile in developing pathways and forging partnerships that unlock transformational career opportunities for City Colleges students and fuel the Chicago workforce with talent that is prepared to meet the needs of the economy.

Strategic Objective Highlights:

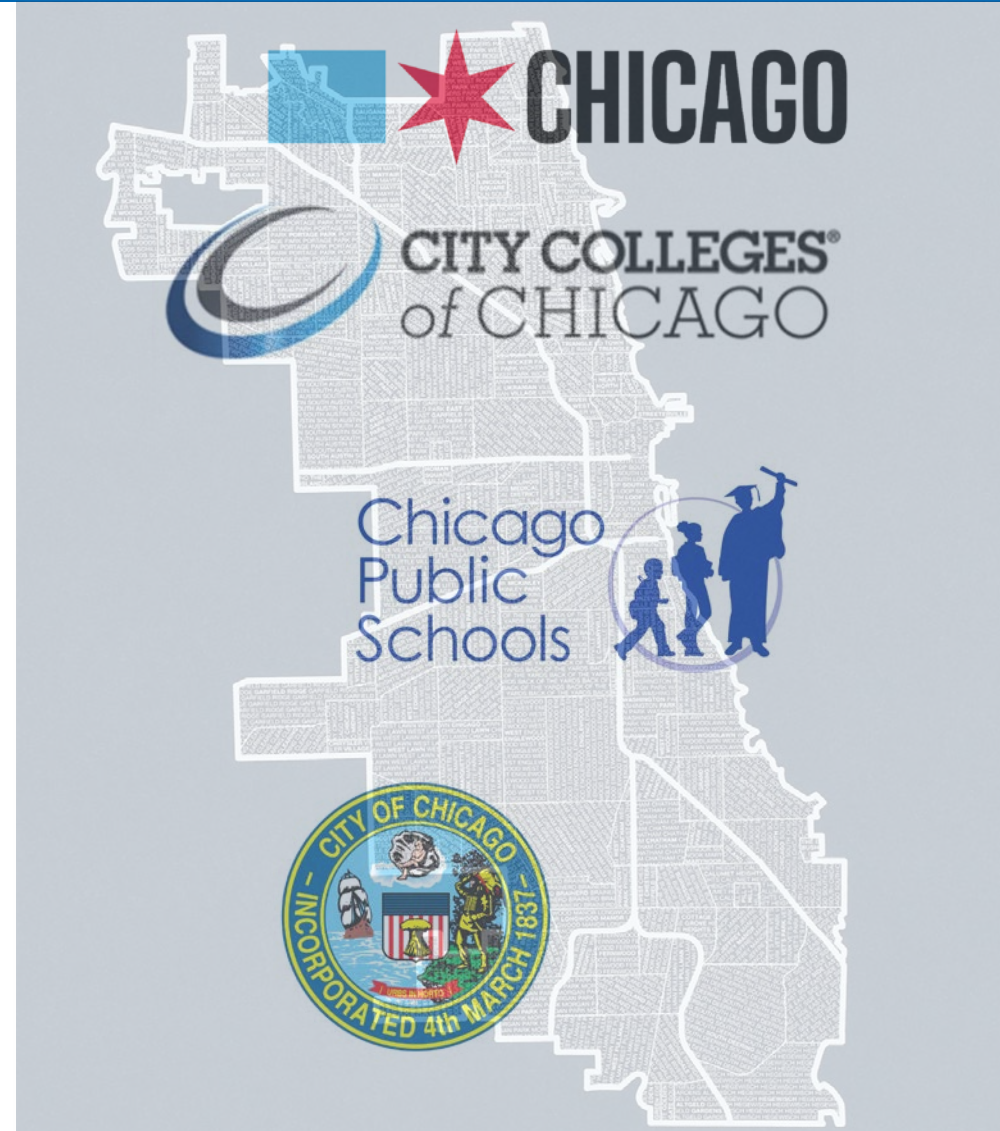
- Expand and improve access of City Colleges educational and career opportunities to Chicago Public Schools (CPS) students through Chicago Roadmap efforts

An Unprecedented Partnership



A Roadmap for Success:

Two of the nation's largest educational systems, CPS and CCC, and the City of Chicago partner to help students move to and through college and into careers.



Driving Success for All Students

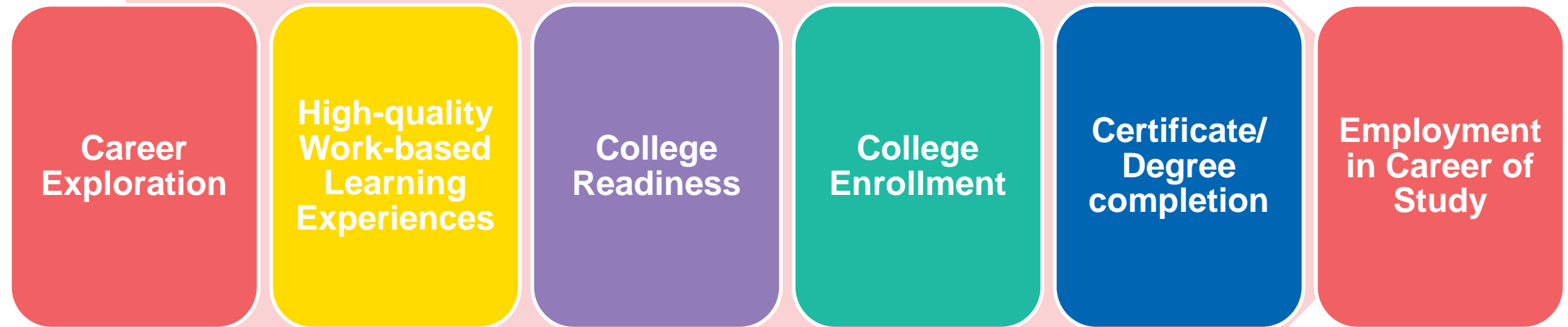


The Roadmap is focused on three **systems-wide outcomes that drive success for all students**, particularly those most marginalized by how our education systems have worked historically. The Chicago Roadmap is our comprehensive plan for ensuring employment and economic mobility for Chicago's students.



- **Postsecondary Enrollment:** Measured by the percentage of students who enroll directly in a certificate, two-year or four-year program after high school.
- **Postsecondary Completion:** Measured by the percentage of students who complete their postsecondary education, thereby earning a postsecondary credential (certificate, two-year or four-year degree).
- **Employment and Economic Mobility:** Measured by the number of students completing successful job training and placement in Chicago's workforce to create economic mobility and inclusion in our economy.

The Roadmap Pathway to Employment & Economic Mobility



Key 5-Year Goals

- 35% of CPS students earning early college credits at CCC (at least one)
- 1500 students will 15 credits at CCC by the end of high school
- 30% of CPS graduates will enroll directly into CCC after high school
- 80% of CPS graduates who directly enroll in CCC will persist from the fall to spring
- 71% of CPS grads eligible for college-credit bearing math upon entering CCC
- 81% of CPS grads eligible for college-credit bearing English upon entering CCC

	2019 Baseline	2020 Baseline	2021 Year 1	2025 Goal
CPS students earning at least one early college credit at CCC	17%	19%	15%	35%
CPS students earning 15+ early college credits at HS graduation	327	350	235	1,500
CPS grads enrolling directly at CCC post graduation (Fall term)	21%	16%	TBD	30%
Fall-to-Spring persistence	75%	74%	TBD	80%
CPS grads eligible for college-level math upon entering CCC	41%	57%	61%	71%
CPS grads eligible for college-level English upon entering CCC	35%	39%	45%	81%

Systemic Alignment



Executive Committee

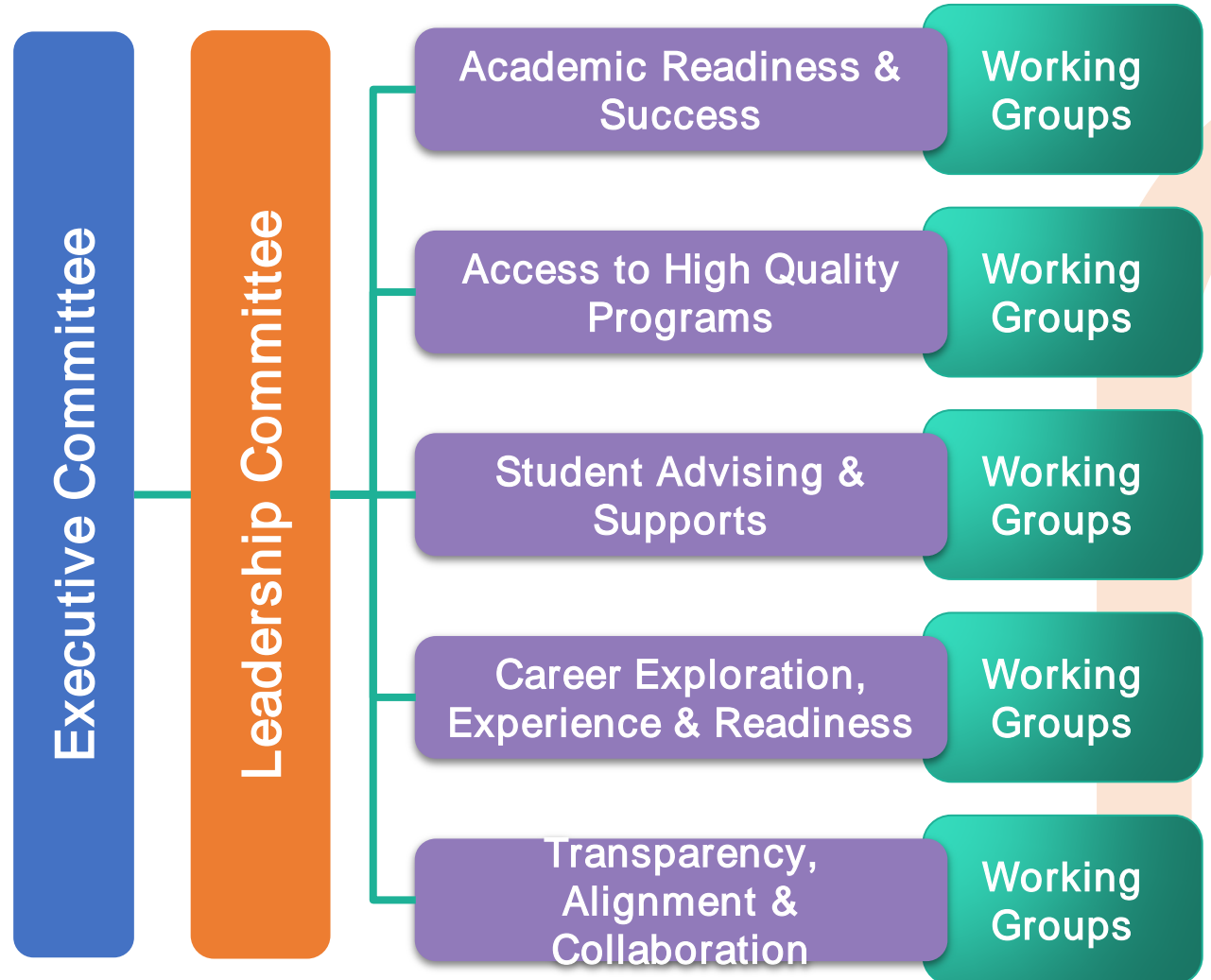
- CPS CEO and CCC Chancellor, and Deputy Mayor for Education

Leadership Committee

- Roadmap Leaders from CPS & CCC

Working Groups

- Cross-departmental selection of staff within each institution, external partners as needed



Domain 1: Academic Readiness & Success

High Impact Initiative – *Transitional Learning*: Access to transitional courses in high school gives students an avenue to college-readiness that is less high-stakes than a single-measure test or score.

- Transitional Math in **70 CPS high schools; 3,381 students**.
- Semester 1 pass rates: **92.5%**
- Next year: **piloting 2 sections of Virtual Transitional Math** for select schools/ students
- Next year: looking to **expand to more Charters and Options** high schools

- Transitional English in **24 CPS high schools; 1,936 students**.
- Semester 1 pass rates: **89%**
- **Unanimously approved** by ISBE/ICCB panel for **portability**
- Next year: expanding to **35+ CPS high schools**

	2019-Baseline	2020-Baseline	2021 Year 1	2025 5-year goal
% of CPS grads who are eligible for credit-bearing courses in math upon entering CCC	41%	57%	61%	71%
% of CPS grads who are eligible for credit-bearing courses in English upon entering CCC	35%	38%	45%	81%
% of CPS Grads enrolled at CCC that complete a credit of college math in their first year	33%	44%	TBD	50%
% of CPS grads enrolled at CCC that complete a credit of college English in their first year	53%	57%	TBD	60%

Domain 2: Access to High-quality Programs

High-Impact Initiative: Dual Credit Model Pathways

Key Roadmap Lever for Economic Responsiveness: combines meaningful work-based learning experiences with early college credits in high-wage/ high-growth sectors

- **Dual Credit Model Pathways are clear, educationally coherent maps** that identify priority dual credit and early college courses that are foundational to high growth industry areas and offer entry points for employers to support coursework and related experiences.
- Pathway courses are selected to require minimal pre-requisites and are foundational for many career pathways
- Schools do **not** need to be CTE schools in order to offer a model pathway(s), thereby offering equitable access to schools otherwise unable to provide CTE coursework
- Model Pathway students can take **key career-focused courses in a high-wage, high-growth industry**, have the opportunity to earn 15+ early college credits AND an industry-recognized credential. They are also prime candidates for **youth apprenticeships** during their senior year.

Information
Technology



Master
Builder



Advanced
Manufacturing



Health
Sciences



Seamless connection to
postsecondary programs

Industry Recognized
Credentials

High-Quality Work-Based
Learning Experiences

Dual-Credit Courses

Domain 2: Access to High-quality Programs

High-Impact Initiatives: *Model pathways & Early College expansion*—including new, cross-institutional best-practice committee and engaging CPS-CCC faculty groups on curriculum development.

MODEL PATHWAY HIGHLIGHTS

- Incubated **Healthcare Model Pathway** in FY21 and **launched pathway in 8 high schools** in FY22. Preparing now for year 2 including the **10 credit hour BNA program** for high schools.
- Currently incubating and **preparing to launch 3-strands of IT model pathways, Construction & Advanced Manufacturing pathways** in the Fall.
- **Identifying new pathways** to incubate in FY23 for continued growth and expansion

EARLY COLLEGE HIGHLIGHTS

- Expanded access to Dual Credit by piloting **online-live courses in 14 high schools.**
- Started **cross-institutional Dual Credit Implementation Committee**, focusing on improving communication and processes related to Dual Credit
- Executed **6 Dual Credit course teams comprised of faculty from both CPS & CCC**, to develop high-quality course materials for English 101, Math 118, Bio 120, Bio 116, CIS 101 and CIS 116

Pathway	Pilot Implementation	#of High Schools	#of students in the first year
Healthcare	Fall 2021	8	200
Healthcare	Fall 2022	2	TBD/~50
IT	Fall 2022	13	TBD/~350
Manufacturing	Fall 2022	2	TBD/~50
Construction (Chicago Builds)	Fall 2022	1	100
TOTAL		26	750
GOAL BY FY25			1500

Domain 3: Student Advising & Supports

High-Impact Initiative – *Navigators & Accessibility Supports*: By providing supports to help all students enroll in college, we are providing a crucial bridge to economic responsiveness.

NAVIGATOR HIGHLIGHTS

- Have successfully grown the Navigator program from **7 Navigators in 16 high schools to 12 Navigators serving in 46 high schools**, including 4 Charters and 12 Options high schools.
- We have focused growth/placement on schools most in need of support; **primarily assessing college-going rates**
- Through the Roadmap, **nearly 25 percent of CPS graduates have access to a CCC post-secondary navigator** to help them through the enrollment process throughout their senior of high school.

ACCESSIBILITY SUPPORT HIGHLIGHTS

- **Just Hired:** Accessibility Support Manager to develop system-wide bridges and resources needed to improve college-going rates for students with disabilities.
- **CCC ACCESS Center Orientation** specifically for **Diverse Learners** at all 7 colleges this summer to help successfully on-board students and to get connected to their **accommodations/ supports**. Students will get **career coaching**, learn about **campus supports**, get **Brightspace/ technology** support and be able to **walk their schedules**. They will also receive a **\$250 stipend** for participation.

	District HS	Options HS	Charter HS	TOTAL
FY20	16	0	0	16
FY21	24	8	0	24
FY22	30	12	4	46
FY23	TBD	32 (all)	TBD	65+

College enrollment rate	2019	2020
ALL CPS grads	67%	62%
CPS grads with IEPs	46%	37%
ALL CPS grads to CCC	21%	16%
ALL CPS grads with IEPs to CCC	13.5%	10%

Domain 3: CPS Enrollment Days, May 17-18-19

New Initiative: CPS Enrollment Days for CCC-bound students at ALL CPS high schools—including Options and Charters. Goal: make progress on application steps including registration in classes. Directly designed to address potential summer melt, by proactively helping students get enrolled in college prior to high school graduation.

- Schools must **sign-up in advance with partner college**, and **send lists** of participating students.
- Students will be **pre-screened and assigned to category** to best support their needs:
 - Admissions Support
 - Financial Aid Support
 - Advising
 - Surprise Students (weren't expecting but happy they are here)



The graphic features the title "City Colleges Enrollment Days" in a large, blue, sans-serif font. Below the title is a horizontal row of seven colored dots: yellow, red, purple, green, orange, and brown. Underneath the dots is an illustration of five diverse students (three men and two women) seen from behind, each wearing a colorful backpack. The students are positioned in a line, facing right.

CPS graduating seniors who are heading to City Colleges can tap into the programs, resources and supports they need to be successful as a City Colleges student this fall.

Students will:

- ✓ Complete outstanding application and enrollment steps
- ✓ Get a campus tour
- ✓ Learn more about their future college
- ✓ Meet future classmates and friends
- ✓ Take home college swag to show their school spirit

Students must attend with their high school and cannot register on their own. High school administrators can learn more and sign their group up at www.ccc.edu/enrollmentdays.

Domain 4: Career Exploration, Experience & Preparedness

High-Impact Initiatives: By providing real-world, hands-on experiences such as Youth Apprenticeships and Career Exposure activities, students receive a head start in their chosen career path.

- ✓ Career Launch Chicago placed 19 students in pre-apprenticeships during Summer 2021
- ✓ Career Launch Chicago officially launched first cohort of 23 YOUTH APPRENTICESHIPS January 2022!

Lurie Children's Hospital	S & C Electric	Rush U Medical Center	North-western Medicine	North-western Medicine	Gerber Glass & Collision	CPS Office of CS
Facilities Management	Advanced Manufacturing	Information Technology	Pharmacy Technician	Information Technology	Autotech	Information Technology
1	2	4	3	2	2	9

Career Spotlights @ CCC

All-day event available to CPS high school seniors highlighting CCC's centers of excellence and career pathways, hands-on demos, and student panels.

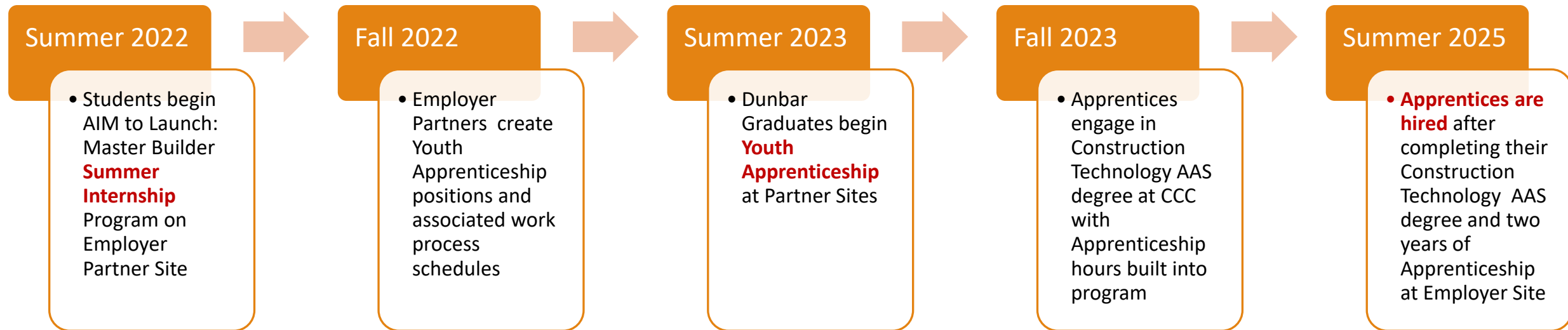
- ✓ Daley on 12/14: 10 schools and 200 students attended and toured MTEC
- ✓ Truman on 3/31
- ✓ Olive Harvey on 4/28



Domain 4: Career Exploration, Experience & Preparedness

Bluhm Family Foundation Master Builder Construction Pathway: New **Model Pathway** with high-quality work-based learning experiences throughout , stacks into new AAS in **Construction Technology**.

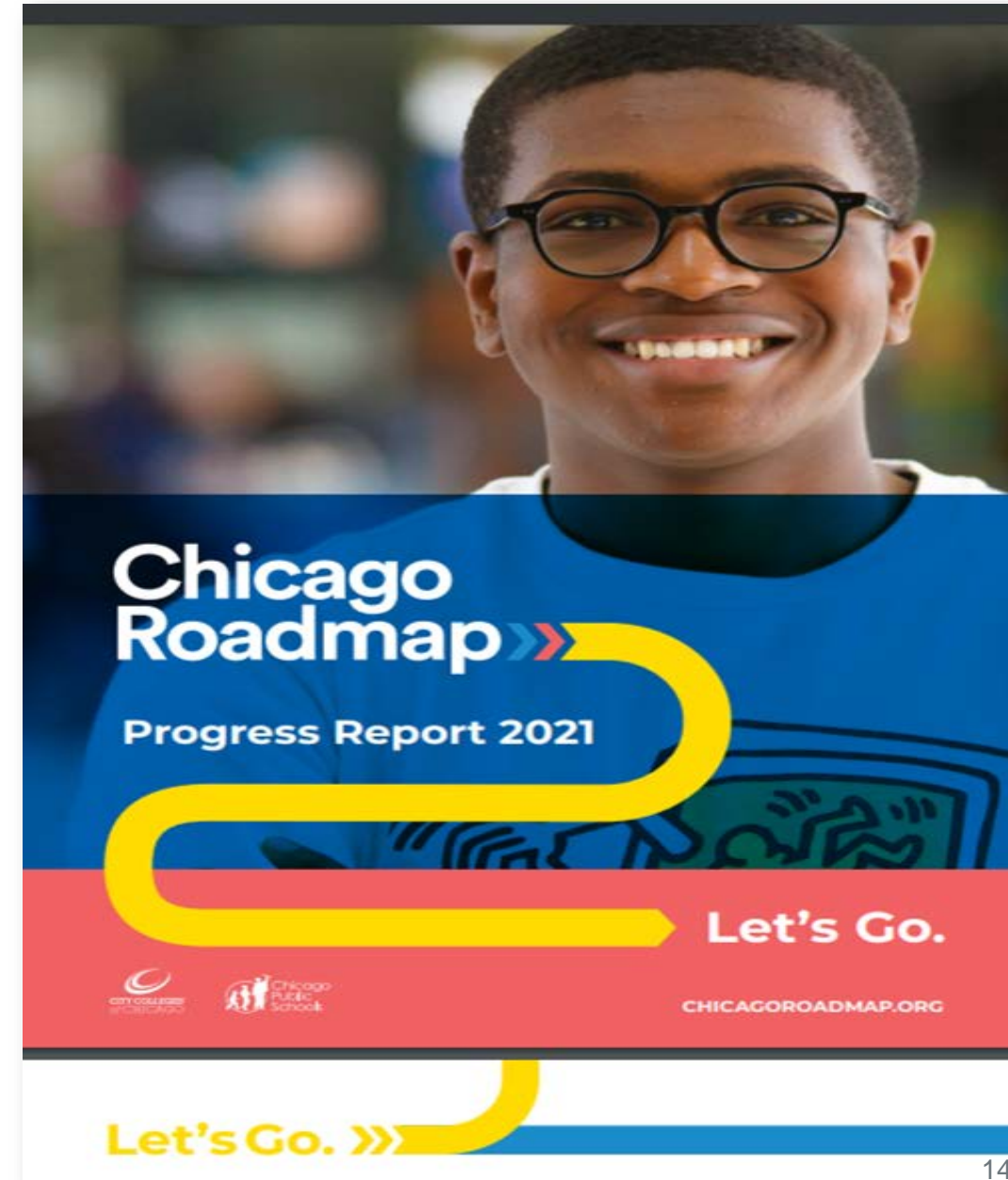
- The Master Builder Construction Pathway would bridge the current Chicago Builds program with the new AAS, creating a seamless pathway while also offering two opportunities for Work-based learning (Internship & Youth Apprenticeship)
- Students matriculate into the Construction Technology program at Kennedy-King College's Dawson Technical Institute to complete their AAS degree.



Domain 5: Transparency, Alignment & Collaboration

High-Impact Partnership – Increase relational trust and programmatic and procedural alignment between CPS & CCC.

- Achieved a **major milestone** in adding **Consent check-box** for CPS students to consent to sharing their transcript data via our CCC application and student portal. This will allow us to help students with using **GPA for proper course placement**, verifying **Transitional Coursework completers**, and releasing residency holds.
- First **Roadmap Annual Progress Report** released in October 2021
- First **Roadmap Scorecard** released April 2022



THANK YOU!

Questions?