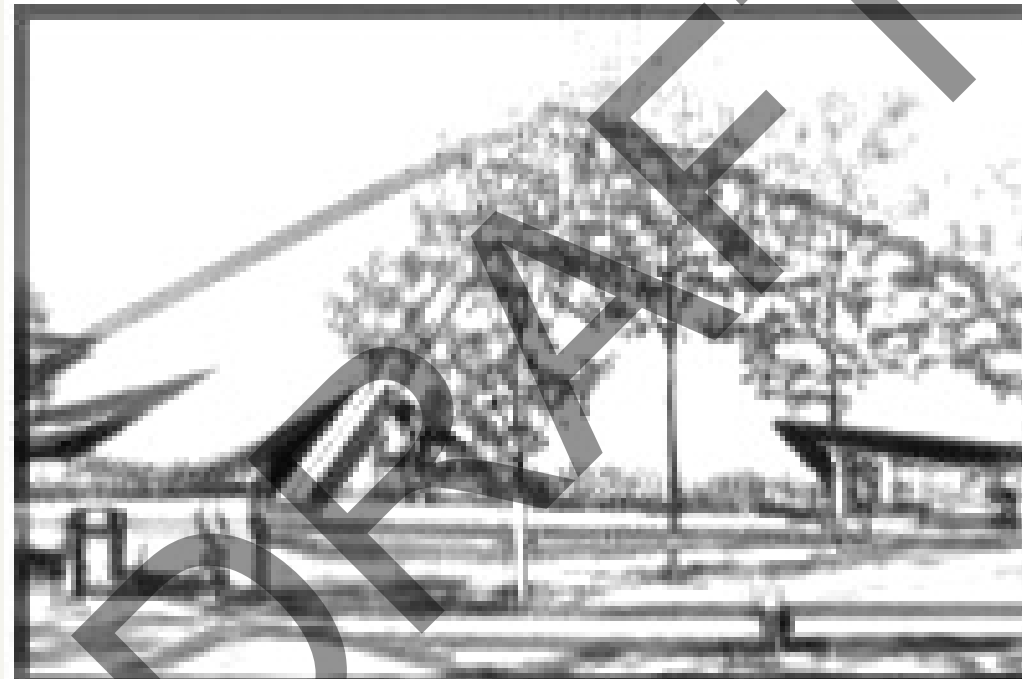


34243

RECEIVED AND PLACED ON FILE – BOARD OF TRUSTEES
COMMUNITY COLLEGE DISTRICT NO. 508
MAY 6, 2021

S T U D E N T S F I R S T



WILBUR WRIGHT COLLEGE

Board of Trustees Update
May 6, 2021

MEET THE PRESENTERS

David Potash, PhD
President
dpotash@ccc.edu

Pamela J. Monaco, PhD
Interim Vice President Academic Affairs
and Student Services, Dean of Instruction
pmonaco@ccc.edu

Romell Murden-Woldu
Dean of Student Services
rmurden@ccc.edu

Ken Santiago
Dean of Humboldt Park Campus
ksantiago6@ccc.edu

Doris J. Espiritu, PhD
Director, Center of Excellence in
Engineering
despiritu@ccc.edu

Dianna Garzón
SGA President,
Wilbur Wright College
dgarzon4@ccc.edu

Jesse Bustos
SGA Vice President,
Wilbur Wright College
jbustos25@ccc.edu



A G E N D A

- **VALUES & STRATEGIES**

- Inclusive Excellence
- Continuous Improvement
- Strategic Planning

- **WRIGHT IN THE COMMUNITY**

- Humboldt Park
- Community Initiatives
- Adult Education

- **ACADEMIC AFFAIRS**

- Strategic Plan
- Curricular Innovation
- HLC
- CTL

- **STUDENT SERVICES & EXPERIENCE**

- Core Values
- Engagement
- SGA

VALUES & STRATEGIES

STRATEGIC PLAN

Provides overall vision and direction for Wright College.

[Learn More](#)

SEM PLAN

Directs student access, onboarding, support and completion.

[Learn More](#)

STUDENTS FIRST

Communication,
Collaboration,
Planning & Data

EQUITY PLAN

Raises and strengthens Wright's commitment and focuses effort in key areas.

[Learn More](#)

COMMUNITY ACTION PLAN

Civically engages students and brings Wright closer to the community.

[Learn More](#)

WRIGHT COLLEGE

Fiscal Year KPI Completion to Date

April 18, 2021

Since AY 2018-2019, Wright has **averaged 1,430 early college** enrollments a year



***FY-20:** 35% Level Gains; 65% Post-Test rate
FY-19: 45% Level Gains; 70% Post-Test rate



411 Students up for **Completion** - Spring 2021



924 STAR Scholars have completed at Wright since the program's inception in Fall 2015



We've improved fall-to-spring **retention** from 68.1% for fall 2015 students to **73.0%** for fall 2020 students.



We've improved our IPEDS Three-year **Graduation Rate** from 16% for the 2013 cohort to 25% for the 2017 cohort.

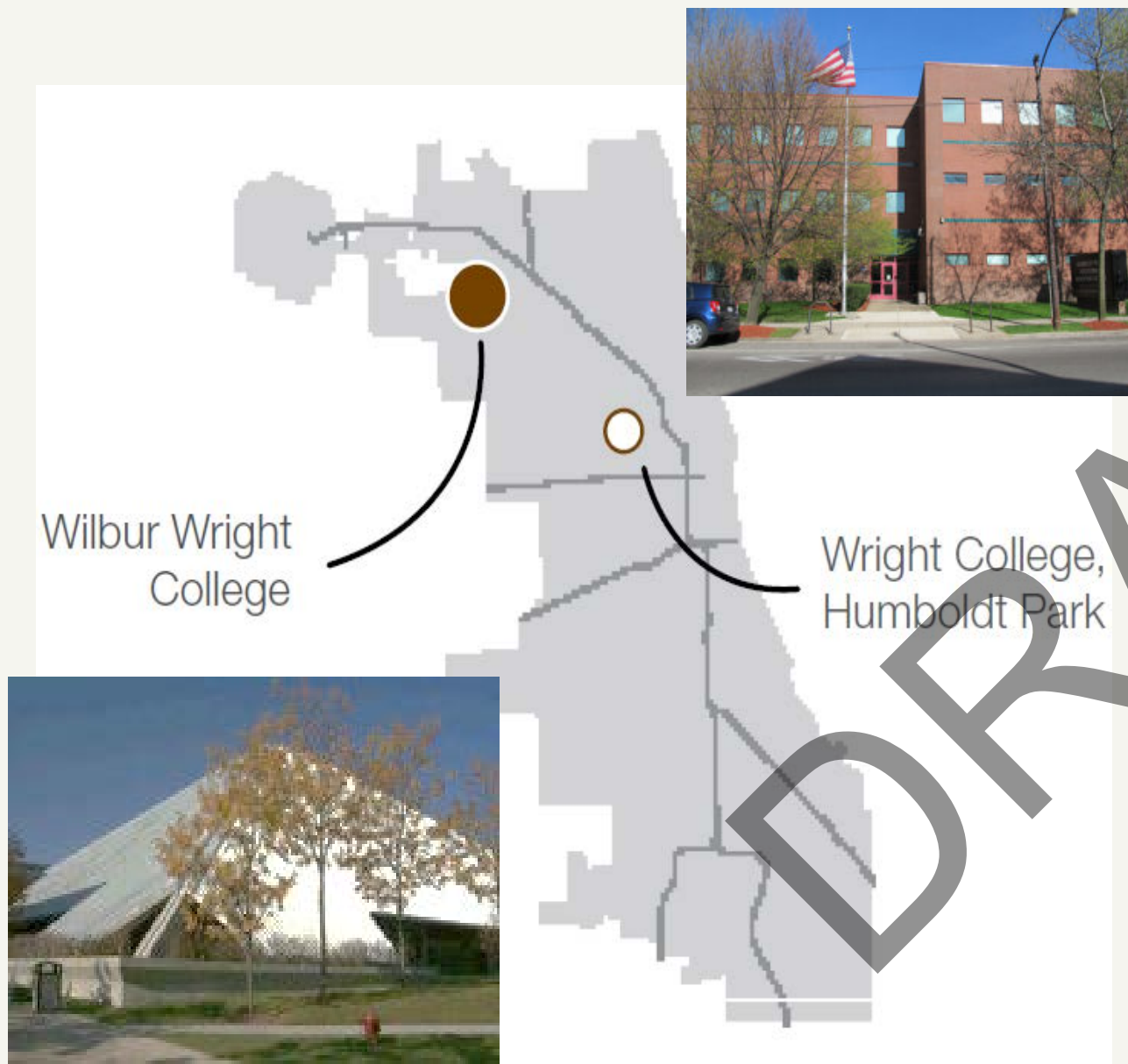


*No NRS during the pandemic, testing stopped March 2020.

Key Performance Indicator	FY 21 Targets			Target Completion		
	YTD	Floor	Stretch	# From Floor	Percent to Floor	Percent to Stretch
Total Enrollment	12,452	16,274	17,665	(3,822)	76.5%	70.5%
Credit Enrollment	8,838	9,884	11,022	(1,046)	89.4%	80.2%
ADED Enrollment	3,133	4,770	4,873	(1,637)	65.7%	64.3%
Cont. Ed Enrollment	650	2,000	2,150	(1,350)	32.5%	30.2%
CH Production	98,383	118,608	132,264	(20,225)	82.9%	74.4%
FA-to-SP Retention	73.0%	73.0%	75.0%	0.0%	100.0%	97.3%
FA-to-SP Retention - 1st year	76.9%	75.0%	77.0%	1.9%	102.5%	99.9%
Taking & Passing English	37.5%	47.0%	49.0%	-9.5%	79.8%	76.5%
Taking & Passing Math	34.3%	36.0%	38.0%	-1.7%	95.3%	90.3%
ADED Level Gains	4.5%	47.0%	49.0%	* -42.5%	9.6%	9.2%
IPEDS 150 Grad Rate	23.0%	30.0%	33.0%	-7.0%	76.7%	69.7%
CCC Outcome Measures	32.0%	40.0%	45.0%	-8.0%	80.0%	71.1%
Transfer with Degree	50.9%	52.0%	54.0%	-1.1%	97.9%	94.3%

Source: OpenBook FY20-FY22 Strategic Dashboard. Data as of 4/18/2021.

Wright College - Humboldt Park



Wright serves a diverse community from two campuses, Main and HPVEC. In its 25th year, Humboldt Park offers credit, Adult Education and CE courses.

Wright's commitment to being a Hispanic Serving Institution (HSI) is strong, through programming, student supports, professional development, and pursuit of the Seal of Excelencia.

Adult Education offers ESL and High School Equivalency, basic computer skills, career bridge and citizenship classes to motivated, inspiring and determined students.

Adult Education is Wright College.

Wright in the Community

Partnership between Northeastern Illinois University and Wilbur Wright College

TITLE V: CAMINOS AL EXITO



MISSION

Our goal is to close equity gaps connected to student success and retention.

PROGRAM OVERVIEW

The main objective is to expand access to college by building a structure that engages, advises, and supports students and their families from Wilbur Wright and high schools to NEIU.

PARTNERS

Northeastern Illinois University
Wilbur Wright College
13 Chicago Public High Schools:
Amundsen - Foreman - Lakeview - Lane Tech -
Mather - North Grand - Prosser Career Academy -
Roosevelt - Schurz - Senn - Steinmetz College Prep -
Taft - Von Steuben Metropolitan Science Career



CONTACT INFORMATION

Tricia Rosado,
Title V: Caminos al Exito Director, NEIU
trosado@neiu.edu

Susana Mares,
Title V: Caminos al Exito Director, Wright
smares4@ccc.edu

Noemi Roman,
Outreach Coordinator, NEIU
nroman2@neiu.edu

Theodora Koumoutsakis,
Retention and Transfer Coordinator, NEIU
tkoumou@neiu.edu

Rene Lopez-Cabrera,
Outreach and Retention Coordinator, NEIU
rlopez10@neiu.edu

CAMINOS AL EXITO

WRIGHT JOBHIRE

at Wilbur Wright College



Wright Jobhire is a one-time, grant-funded initiative designed to bring equity to all Chicago residents, with special consideration to the Austin, East Garfield Park, Humboldt Park, North Lawndale, and West Garfield Park.

Enroll in a free, short-term program that prepares low income, unemployed, and underemployed learners for career in a high-demand field! Programs last no longer than two semesters, and successful completers can receive college or industry credentials.

Students will enjoy these benefits:

- Full tuition coverage
- Childcare assistance
- Job placement assistance
- Transportation assistance

Register for Wright JobHire
Interested students should:
• Visit www.ccc.edu/wrightjobhire and complete the interest form
• Complete an application at www.ccc.edu/apply

Have these documents ready before the first day of class:

- Current license or state ID
- Proof of address (utility bill, mortgage, or lease)
- Income verification (paycheck stub, SNAP, or TANF award letter)

Eligibility

- Unemployed/underemployed Chicago residents, with consideration given to residents of Austin, East Garfield Park, Humboldt Park, North Lawndale, and West Garfield Park
- Aged 18+
- High school diploma or high school equivalency credential
- No prior City Colleges of Chicago debt

 ccc.edu/wrightjobhire | 773-COLLEGE

wei





Campus Compact

Service / Compact

Community

Wright in the Community

EXITO

Our goal is to **close equity gaps** connected to **student success** and retention **during** the critical phases of **outreach, enrollment, and transfer**. The main objective is to expand access to college by **building a structure that engages, advises, and supports students** and their families **from** high schools and **Wilbur Wright to Northeastern Illinois University**.

WEI

Tuition for over **200 students**
68% identify as African American
Programs
Cannabis Processing Technician
CNC manufacturing
Criminal justice
Cyber security
Networking
Solar panel installation
Web development

HEALTHY
FOOD MARKET

The Wright Food Market made the pivot to **curbside pickup** in **October 2020**. Volunteers have **served over 1500** people since then. The efforts have seen a **78.7% increase in food security** for our students that participate in our services.

CAMPUS
COMPACT

2020 Recipient of Campus Compact's **Eduardo J. Padrón Award for Institutional Transformation** The national award “recognizes **community colleges** that have successfully **implemented** institution-wide efforts to **address issues** of public concern by **aligning teaching, research, practice, and values** in service of the **common good**.”

[Learn More](#)

Community

CAP-Community Action Plan Helps Align Actions

PARTNERSHIPS

Wright is an integral piece of the community. The CAP helps the College grow its partnerships, collaborate with local CBOs, and provide space for community events.

CURRICULAR

The CAP will augment Wright's global curriculum, providing increased opportunities for students in service learning, civics, and learning about how to make a difference in their college and communities.

CO-CURRICULAR

Through increased and augmented opportunities for service, volunteerism, and democratic engagement, the CAP will help students beyond the classroom.

PROMOTION

Wright has an array of fantastic community efforts. The CAP allows us to consistently message our successes, gain feedback from our community, and keep everyone abreast of new opportunities.

ALIGNMENT

The CAP will complement other major planning efforts at the College, including the Strategic Plan and enrollment and equity initiatives.

EQUITY

Wright wants all students to have an opportunity to practice civic engagement and get involved with their communities. A wide array of partners and initiatives can help us ensure that they do.





How We Learn

STRATEGIC PLAN - SPIT to the future

- Strategic Plan Implementation Taskforce (SPIT)
- Plan in operation, with the college involved
- Conversations and work across all units of the campus
- Results surpass expectations

Examples of Curricular Innovation

- Associate of Fine Arts—excellence in the *arts* and sciences
- Cannabis Dispensary
 - Cooperation from Continuing Education and Credit
 - Collaboration with sister college – Olive-Harvey
 - Hybrid growing of hemp for in-home labs
 - WEI funding to address lack of diversity in the field
 - 100% retention
- More on the way!



Investment in the Higher Learning Commission Assessment Academy

- Strengthened relationships across departments
 - Faculty led revision of Gen-Ed outcomes to Institutional Learning Outcomes (ILOs)
 - Engaging of the entire college- everyone contributes to student learning
-

CTL - Center for Teaching and Learning

- Pedagogy workshops -being vulnerable with your peers
- What we carry forth from the pandemic
- Cooking to chemistry—engaging all the campus
- Sustained series - predictability and building capacity

Center of Excellence (COE)

Engineering and Computer Science

Wright College is the Center of Excellence for Engineering and Computer Science, working with industry experts, partner organizations, and four-year colleges to ensure our programs prepare students for success in the careers of today and tomorrow.

A year and a half since Center of Excellence designation and two plus years from receiving an NSF-HSI grant, Wright’s Engineering and Computer Science department has experienced:



600%

Increase in Enrollment

75%

Transfer to Engineering and Computer Science after 2 years.

94%

Fall to Fall Retention

100%

Transferred students on track for graduation

+ Increased Partnerships

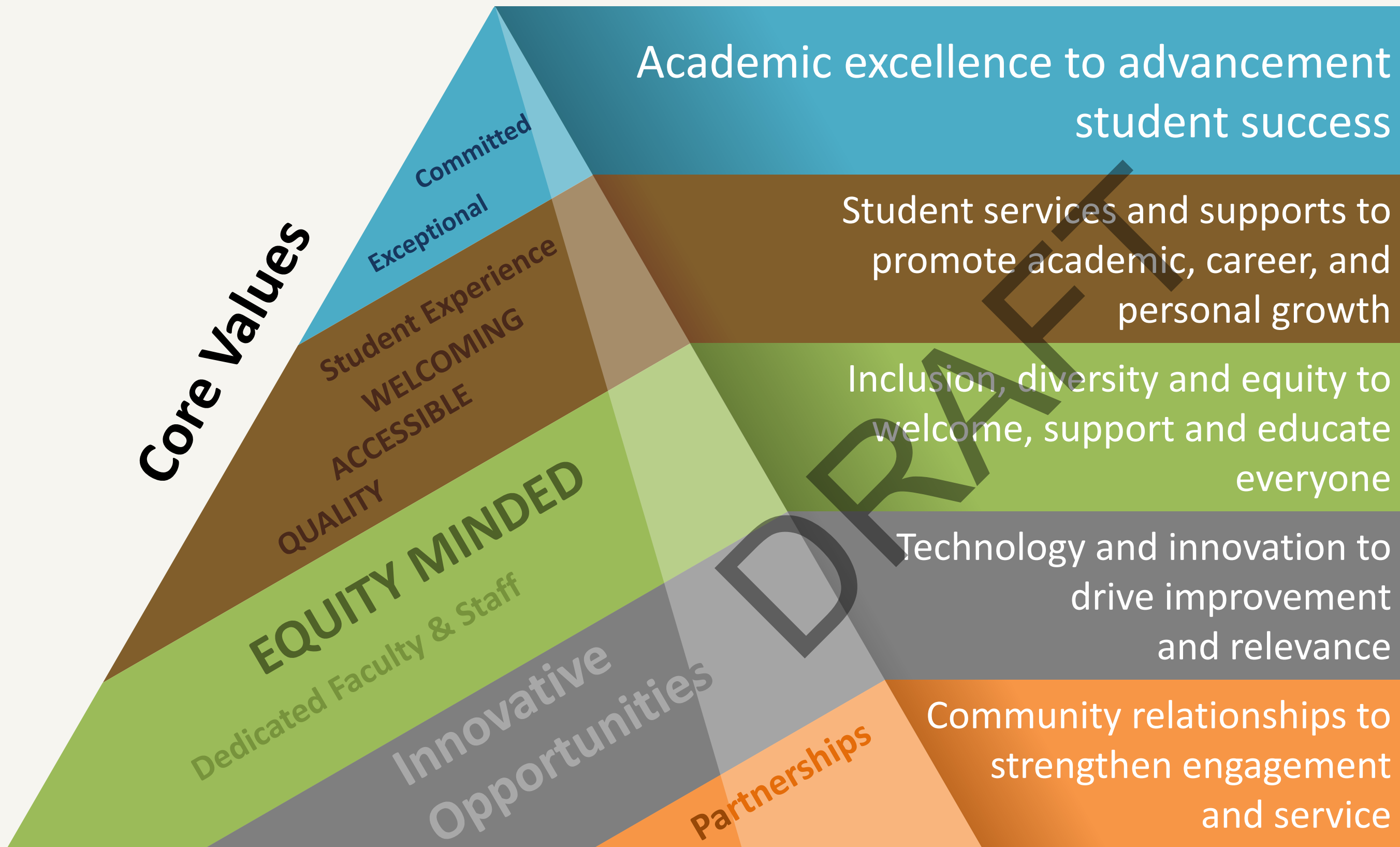
- UIC- Department of Computer Science
- IIT- College of Computing
- DPI – Discovery Partners Institute
- Eight NEW Industry Partners



18 NEW AES Pathways

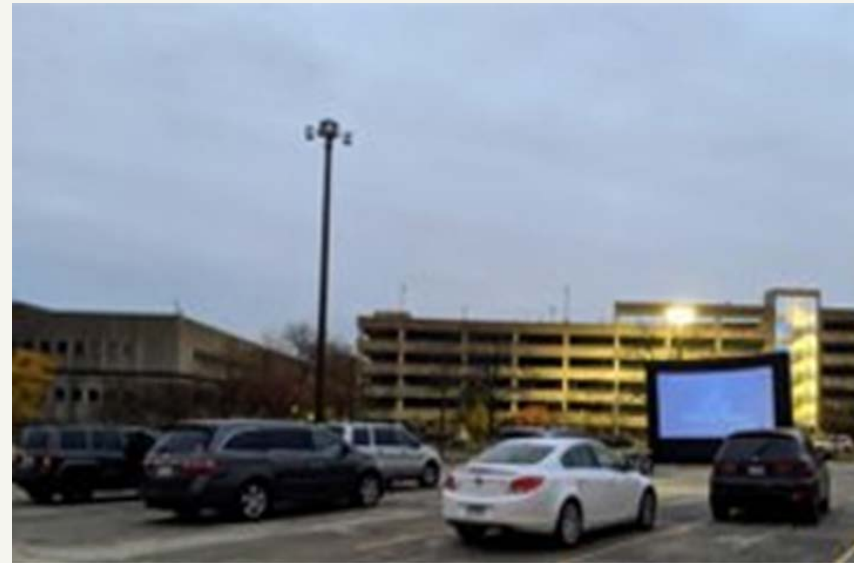


\$5.15M
NEW NSF Grant
Proposal
Submitted



Student services

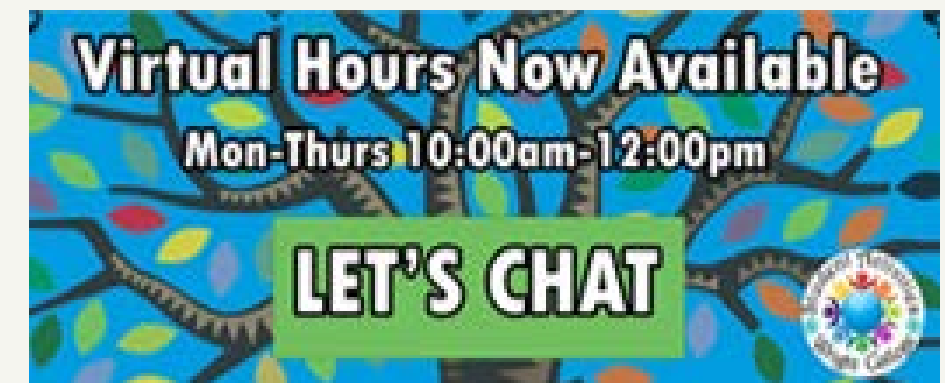
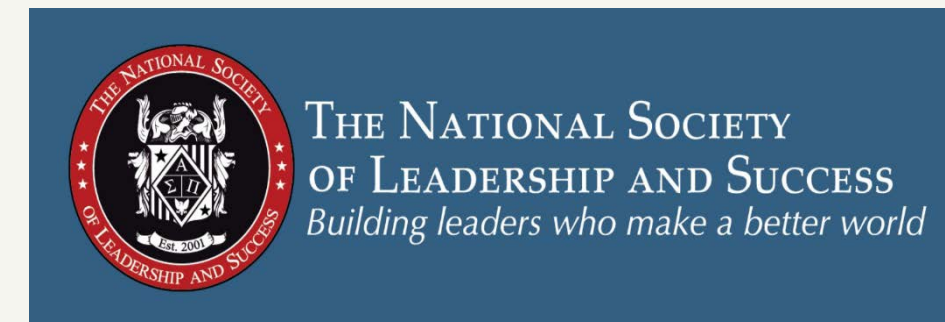
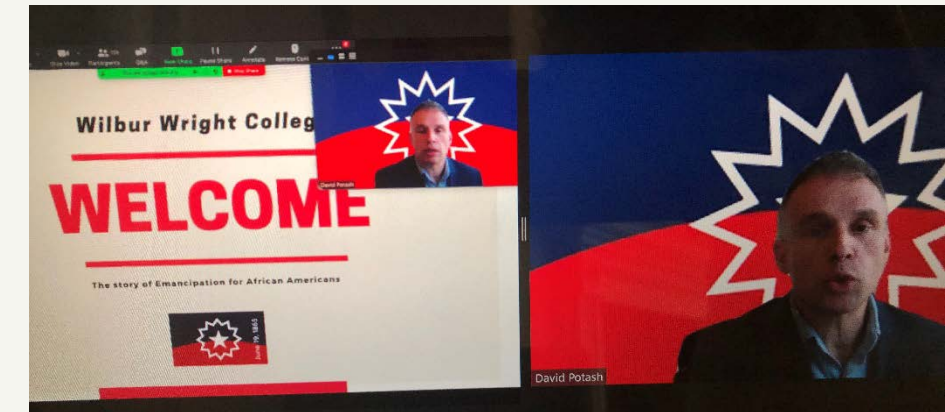
Keeping Students Engaged Through The Pandemic



Socially Distanced Drive – In
Pet Competitions



Virtual Paint Parties, Campfires, and more!



Online Club Meetings and College Events

Student experience



STUDENT GOVERNMENT
ASSOCIATION

Wright College administrators have been very receptive to student concerns. As avid supporters of our student-led initiatives, they have worked with us to better the Wright College experience.

Through our SGA platform, we have met with Wright administrators and advocated for:

- Application Inclusivity Reform (AIR)
- Advising Restructure
- Activity Hour

Application Inclusivity Reform Proposal

In SGA's mission to ensure our students feel safe and included within our college community, we have proposed several additions to the CCC application.

They include:

- Create optional questions for students to select their pronouns, non-legal name, gender identity and sexuality.
- Modernize the application to create an inclusive and supportive environment for all onboarding CCC students.

ADVISING RESTRUCTURE PROPOSAL

Via our recent survey, nearly 80% of students who took the survey are in favor of program plan-focused advising.

SGA proposes having:

- Advisors become specialists within a designated pathway to provide adequate program plan information and resources.
- Students assigned to specific advisors based on their program plan starting Fall 2021

As advisors become content masters on their program of expertise, Wright as an institution will become that much more successful in aiding their students.



Activity-Hour Proposal



Students have also demonstrated an interest in participating in co-curricular activities and expressed their inability to attend due to time constraints.

With all acquired feedback, SGA decided to work together with administrators and faculty proposing

- To make an activity-hour possible, a time when no classes are scheduled, and students are freely able to participate in activities.
- To schedule 3:30 – 4:30 PM



T H A N K Y O U

QUESTIONS?