

32423

RECEIVED AND PLACED ON FILE – BOARD OF TRUSTEES
COMMUNITY COLLEGE DISTRICT NO. 508
SEPTEMBER 4, 2014

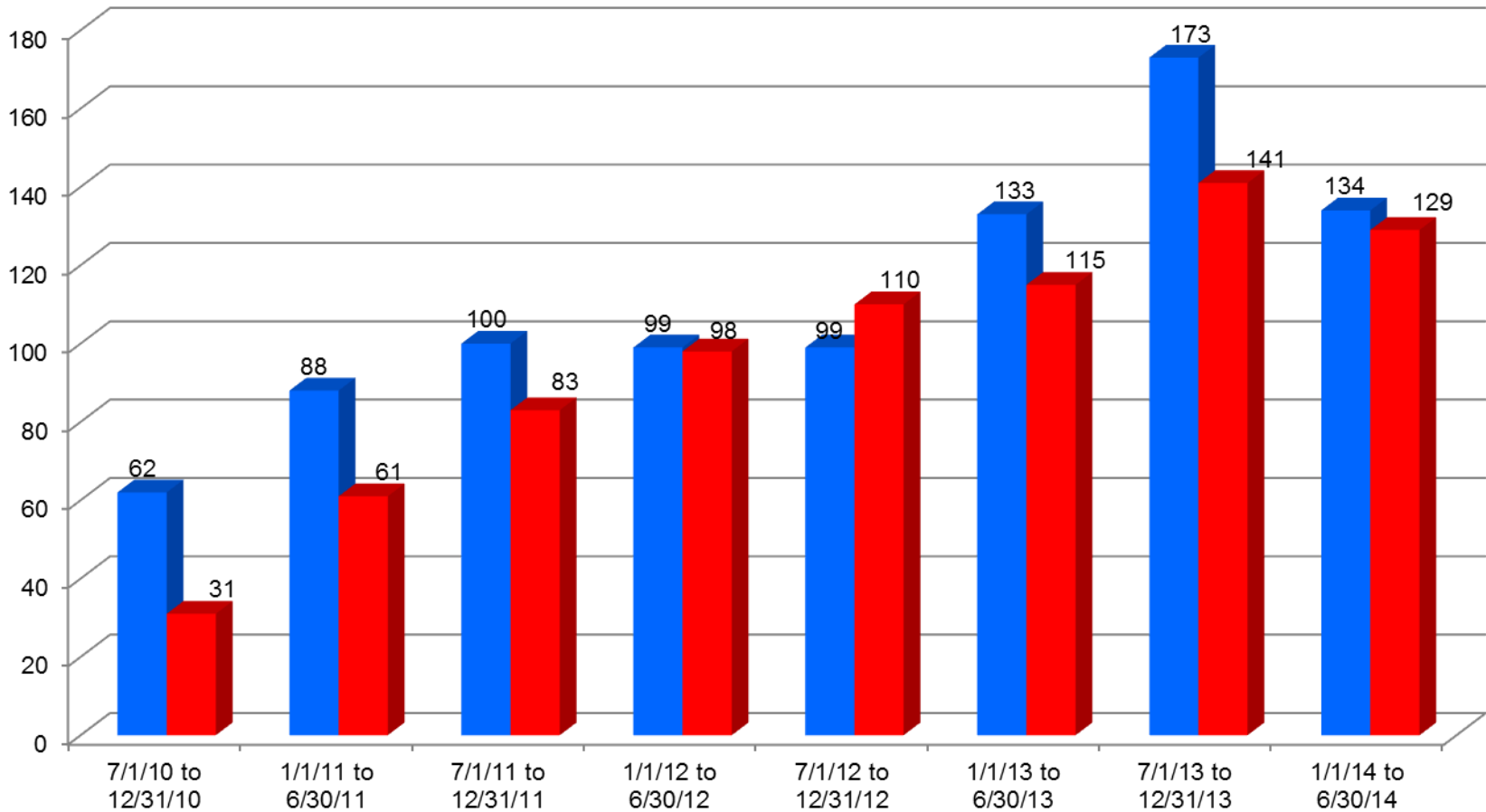
Office of the Inspector General City Colleges of Chicago

Presentation to the Board of Trustees
September 4, 2014



CITY COLLEGES
of CHICAGO
Education that Works

Complaints Received or Initiated by the OIG (blue) and Complaints Closed (red) (through June 30, 2014)



Subject Matter of Complaints Received

Subject Matter (Allegation)	July 1, 2013 to December 31, 2013		January 1, 2014 to June 30, 2014	
	Number	%	Number	%
Violation of CCC Ethics Policy	4	2.31%	3	2.24%
Preferential Treatment	4	2.31%	0	0.00%
Reviews Initiated by the OIG	3	1.73%	0	0.00%
Violation of Responsible Computer Use Policy	0	0.00%	3	2.24%
Discrimination	5	2.89%	4	2.99%
Falsification of employment records	5	2.89%	4	2.99%
Discourteous treatment	10	5.78%	5	3.73%
Engaging in conduct in violation of the ILCS	0	0.00%	5	3.73%
Violation of the CCC procurement policies	0	0.00%	8	5.97%
Fraud (including financial aid / tuition)	11	6.36%	9	6.72%
Sexual or other harassment	10	5.78%	9	6.72%
Incompetence in the performance of the position	0	0.00%	10	7.46%
Misappropriation of funds / Theft	5	2.89%	11	8.21%
Residency	18	10.40%	12	8.96%
Falsification of attendance records	40	23.12%	16	11.94%
Violation of miscellaneous CCC policies	32	18.50%	17	12.69%
Inattention to duty	26	15.03%	18	13.43%
Totals	173	100.00%	134	100.00%

Complaints Closed by Allegation (January 1, 2014 to June 30, 2014)

Allegation	Total Closed	Sustained	Not Sustained or No Policy Violation	Reviews with Recommendations	Referred / Deferred	Other
Violation of CCC Ethics Policy	5	3	2	0	0	0
Preferential Treatment	2	0	1	0	1	0
Reviews Initiated by the OIG	5	0	3	1	0	1
Discrimination	5	0	1	0	4	0
Falsification of employment records	5	1	3	0	1	0
Discourteous treatment	4	0	0	0	3	1
Engaging in conduct in violation of the ILCS	1	0	1	0	0	0
Violation of the CCC procurement policies	2	0	0	0	0	2
Fraud (including financial aid)	4	0	2	0	2	0
Sexual or other harassment	8	0	0	0	7	1
Incompetence in the performance of the position	10	0	0	0	10	0
Misappropriation of funds / Theft	6	2	3	0	0	1
Residency	13	2	6	0	1	4
Falsification of attendance records	21	6	10	1	1	3
Violation of miscellaneous CCC policies	19	1	9	1	5	3
Inattention to duty	19	0	3	0	16	0
Totals	129	15	44	3	51	16

Investigations / Findings by OIG

(through June 30, 2014)

Period	Total Complaints Closed	Total Investigations by the OIG	% of Closed Cases Investigated by the OIG	Total Complaints Sustained or Recommendations Made	% of Investigated Complaints Sustained or Recommendations Made
7/1/2010 to 12/31/2010	31	23	74%	9	39%
1/1/2011 to 6/30/2011	61	45	74%	19	42%
7/1/2011 to 12/31/2011	83	50	60%	15	30%
1/1/2012 to 6/30/2012	98	64	65%	14	22%
7/1/2012 to 12/31/2012	110	74	67%	16	22%
1/1/2013 to 6/30/2013	115	58	50%	17	29%
7/1/2013 to 12/31/2013	141	63	45%	18	29%
1/1/2014 to 6/30/2014	129	66	51%	19	29%
Totals	768	443	58%	127	29%

Average Calendar Days to Close

Reason Closed	7/1/2013 to 12/31/2013		1/1/2014 to 6/30/2014	
	Number	Average Calendar Days to Close	Number	Average Calendar Days to Close
Sustained	18	270	15	188
Not Sustained / No Policy Violation	58	169	44	181
Referred / Deferred	48	1	51	1.37
Subject Inactive	7	51	7	192
Duplicate Complaint	9	1	7	<1
Review with recommendations	0	0	3	475
Annual Residency Audit	0	0	1	132
Subject previously disciplined for same conduct	1	50	0	0
Complaint closed and included with a related active investigation	0	0	1	<1
Totals	141		129	

Recommendations of Disciplinary Action (as of August 8, 2014)

	FY 11	FY 12	FY 13	FY 14	Totals
Recommendations Made	40	42	53	42	177
Disciplinary Process Completed	40	42	51	40	173
Not Completed	0	0	2	2	4
% Completed	100%	100%	96%	95%	98%
OIG Recommendations Followed (incl. employee resignation/retirement)	37	38	48	39	162
Not Followed	3	4	3	1	11
Other Action Taken?	<ul style="list-style-type: none"> • Hours changed (1) • Negotiated 70 day suspension (1) • Verbal counseling (2) • No action taken (7) 				
% Followed	92.5%	90%	94%	97.5%	94%

Disciplinary Action Taken (as of August 8, 2014)

	FY 11	FY 12	FY 13	FY14	Totals
Total Actions Taken*	33	33	41	27	134
Termination	11	14	9	13	47
Other (Suspension / Reprimand / etc.)	8	19	32	14	73
Debarment (Vendors)	14	0	0	0	14
Resignation / Retirement	4	7	7	12	30

**Note: Not including resignation/retirement*

Other Types of Recommendations

❖ Policy Recommendations

✓ 29 recommendations

❖ From 7/1/2012 through 6/30/2014

❖ Recoupment of Funds

✓ 13 recommendations

❖ From 7/1/2012 through 6/30/2014