



CITY COLLEGES
of CHICAGO
Education that Works

Construction Update Presentation to the Ad Hoc Construction Committee

Wednesday, September 17, 2014

FOR DISCUSSION ONLY



CITY COLLEGES
of CHICAGO
Education that Works

Today's Agenda

- 1 Introduction
- 2 OHC TDL Center Construction Update—CCC/FGM
- 3 MXC Project Management/Utility Relocation Update—CCC/Jacobs
- 4 Community Affairs Plan—CCC
- 5 MXC Architect Update—MNI
- 6 General Contractor Update - CMO
- 7 Q & A Session

Next Construction Update Meeting: December 16th at 1:00pm

Today's Agenda

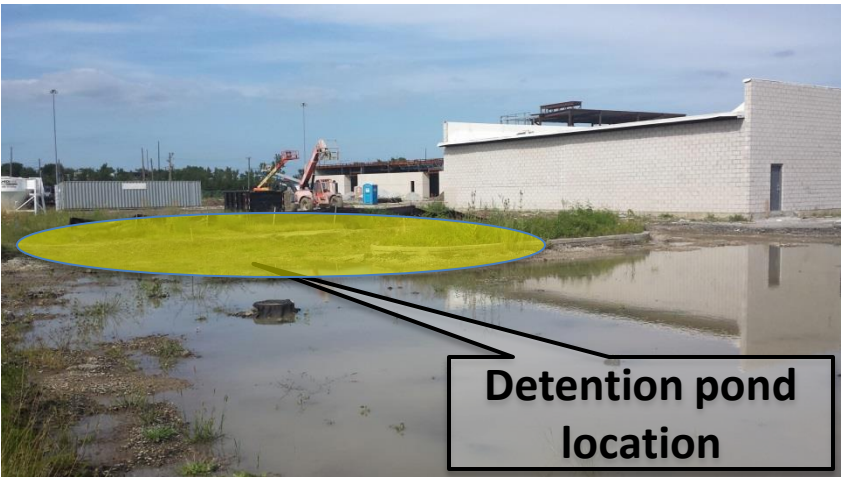
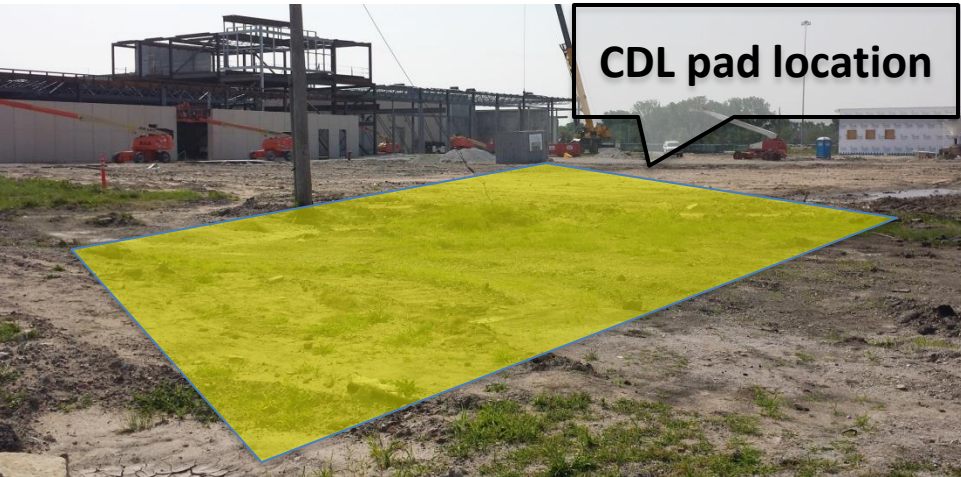
- 1 Introduction
- 2 OHC TDL Center Construction Update—CCC/FGM
- 3 MXC Project Management/Utility Relocation Update—CCC/Jacobs
- 4 Community Affairs Plan—CCC
- 5 MXC Architect Update—MNI
- 6 General Contractor Update - CMO
- 7 Q & A Session

Next Construction Update Meeting: December 16th at 1:00pm



PHASE 1A/1B CONSTRUCTION UPDATE

CONSTRUCTION PROGRESS



Oakley re-mobilized on-site during the week of August 25th

Phase 1 Upcoming Tasks (3 week look-ahead):

- Mass excavation on the West and South sides of the site
- Removal of unforeseen sewer structures recently discovered
- Demolition of remaining contract utilities to be abandoned
- Rough grading/preparations for Phase 3 pavement
- Excavation of detention pond and bioswales areas
- Pour top of foundation wall at West side of building in Diesel Tech Lab.



PHASE 2 CONSTRUCTION SCHEDULE

PHASE 2 PROGRESS AND SCHEDULE UPDATE

Date	Activity
May 1 – May 22, 2014	Mobilization and pre-construction activities
May 19 – June 23, 2014	Steel fabrication (six sequences)
May 23 – August 6, 2014	Precast concrete installation
June 12 – July 22, 2014	Steel erection
June 19 – August 19, 2014*	Steel detail and decking installation
July 31 – September 5, 2014*	Construct masonry wall and install corresponding steel

Barton Malow remains on-schedule to complete their Phase 2 work on or before September 5, 2014.

Phase 2 Precast Concrete Panels *Upcoming* Tasks:

- Shear stud installation on metal decking (at slab on deck areas)
- Miscellaneous repairs and punch list items

Completed items are greyed out

Upcoming Dates are in Bold



PHASE 2 CONSTRUCTION UPDATE

CONSTRUCTION PROGRESS – PRECAST CONCRETE PANELS



Installation of precast concrete panels near the diesel engine labs



PHASE 2 CONSTRUCTION UPDATE

CONSTRUCTION PROGRESS – STEEL INSTALLATION



Phase 2 Steel Completed Tasks:

- Six of the seven steel sequences have been erected
- Three of the seven decking sequences have been completed
- Final steel beam was erected for the building on July 22nd

Phase 2 Steel Upcoming Tasks:

- Remaining decking and detailing



PHASE 2 CONSTRUCTION UPDATE

CONSTRUCTION PROGRESS – STEEL INSTALLATION



Installation of steel within the auto and diesel lab areas



PHASE 2 CONSTRUCTION UPDATE

CONSTRUCTION PROGRESS – STEEL INSTALLATION



Steel installation on the west side of the TDL Center looking North



CONSTRUCTION UPDATE

OLIVE HARVEY COLLEGE TDL CENTER SITE AS OF JULY 23, 2014





PHASE 2 CONSTRUCTION UPDATE

CONSTRUCTION PROGRESS – DIESEL LAB OVERHEAD DOORS FRAMED





PHASE 2 CONSTRUCTION UPDATE

CONSTRUCTION PROGRESS – DIESEL LAB INTERIOR





PHASE 2 CONSTRUCTION UPDATE

CONSTRUCTION PROGRESS – MAIN ENTRANCE



**Floor 2: Advanced
Logistics Classroom**

Classroom

Lobby

Main Entrance



CONSTRUCTION UPDATE

OLIVE HARVEY COLLEGE TDL CENTER SITE AS OF AUGUST 25, 2014





CONSTRUCTION UPDATE

CITY COLLEGES OF CHICAGO CONSTRUCTION ACTIVITIES



CCC haul road
installed on 7/25

Maintenance Garage Completed Tasks Since Last Update:

- All structural steel has been installed and exterior sheathing completed
- CCC temporary haul road installed from the garage access point to the project haul road
- OHC facility equipment originally located in the old Building #2 has been relocated and secured in the new garage

Maintenance Garage Upcoming Tasks:

- Installation of masonry, doors and windows.
- Coordination and installation of utilities (electricity, water and sewer)



CONSTRUCTION UPDATE

CITY COLLEGES OF CHICAGO CONSTRUCTION ACTIVITIES



Maintenance Garage Completed Tasks Since Last Update:

- Installation of overhead doors and windows
- Installation of all exterior brick and mortar joints

Maintenance Garage Upcoming Tasks:

- Finishing the exterior brick and mortar with an acid wash
- Coordination and installation electrical service

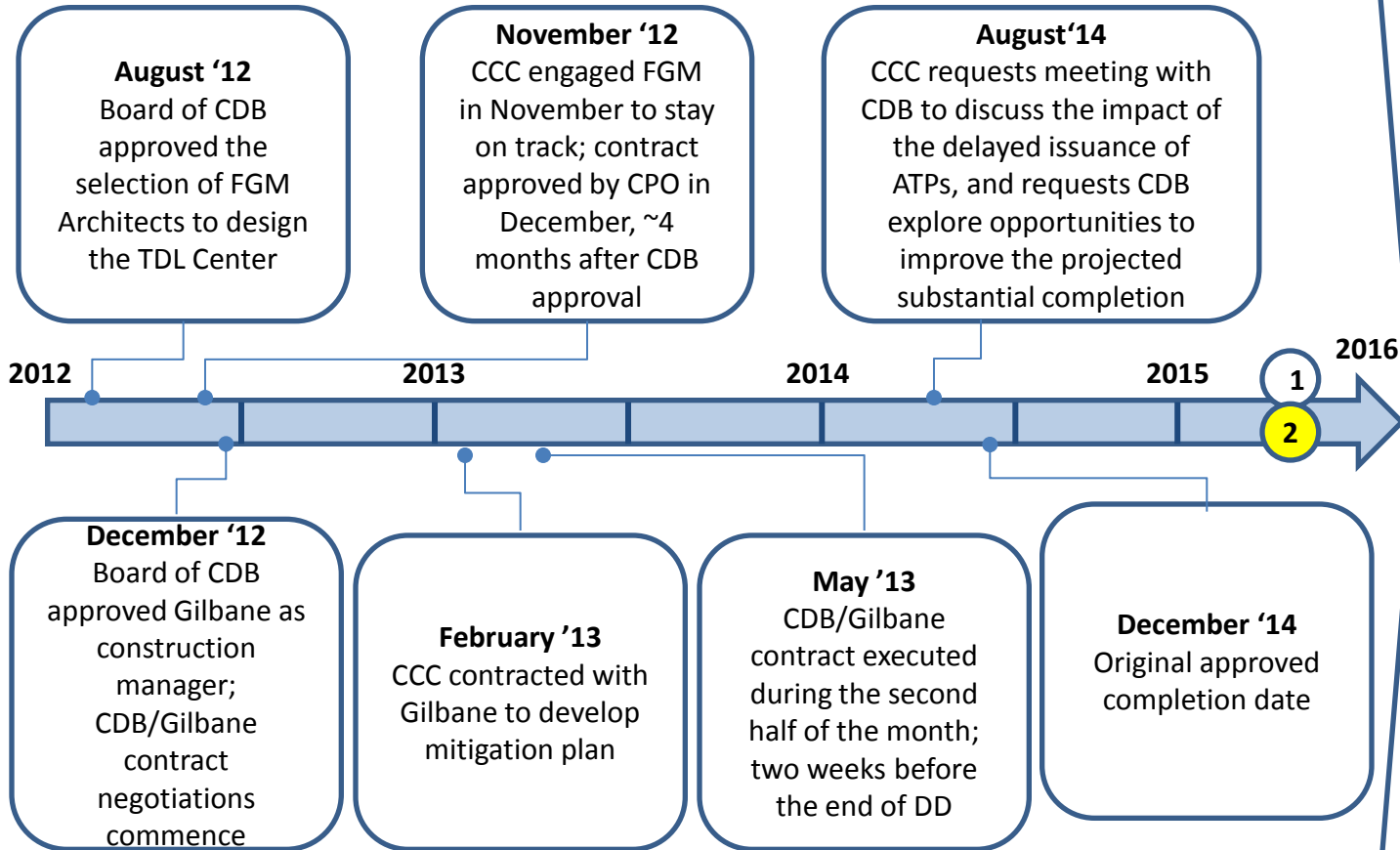
Utility Removal Update:

- CCC has removed all utilities we are responsible for throughout the entire project site



TDL CENTER PROJECT SCHEDULE

UPDATE AS OF SEPTEMBER 10, 2014



1

November '15
Original CDB projected completion date (before mitigation measures)

2

November 28, 2015
The contractual date for the Phase 3 contractors to reach substantial completion

CDB is awaiting final schedule information (coordinated workflows amongst the Phase 3 contractors) prior to identifying opportunities to improve the project end date



TDL CENTER PROCUREMENT SCHEDULE

UPDATE AS OF SEPTEMBER 10, 2014

FFE Item	Scope Confirmation (OHC)	Procurement Recommendation Presented to the Board of Trustees (CCC)	Manufacture Lead-Time (Supplier)	Delivery/Install (Supplier)
Automotive Tools	September	January 2015	Stock	August 2015
Supply Chain Management/Central Store	Complete	February 2015	Stock	August 2015
Furniture	November	March 2015	8-12 Weeks	August 2015
Foodservice	November	March 2015	Stock	August 2015
IT and A/V	In Progress	Estimate: March 2015	Stock	August 2015



TDL CENTER PROJECT BUDGET

UPDATE AS OF AUGUST 25, 2014

Project budget:	\$44,861,500	→	<u>Commitments as per CDB/CCC MOU:</u>
			State of Illinois: \$31,671,600
			City Colleges of Chicago: \$13,189,900
Encumbered costs of construction – paid:			\$ 3,217,772
Encumbered costs of construction – not paid:			29,212,362*
Encumbered change order costs – not paid			397,197
Encumbered project costs:			<u>10,605,696</u>
(includes FF&E, testing, other soft costs)			
Total encumbered project costs:			<u>\$43,433,027</u>

Project is currently \$1,428,473 under budget.

* Changed to reflect the new Fire Sprinkler bid amount that was opened on August 27th. The net result is a positive increase to the current project contingency.

Alignment of Central Store Operations and the Applied Logistics Course Learning Outcomes (Spring 2016)

Program Integration

- Academic learning outcomes are achieved by combining didactic classroom learning and Central Store experiential learning.

Central Store Operations

- Central store business operations support learning outcomes during regular business days and times.

Student Cohort Schedule

- Student cohorts are scheduled in the Central Store M-F during the following times: 8:00-9:20 am, 11:00am-12:20pm, and 1:00-2:20 pm.

Learning Outcomes

- Learning outcomes include Central Store Operations, Receiving, Operations/Business Development, Shipping, and Case Study Analysis.

Procurement/Installation Milestone Schedule

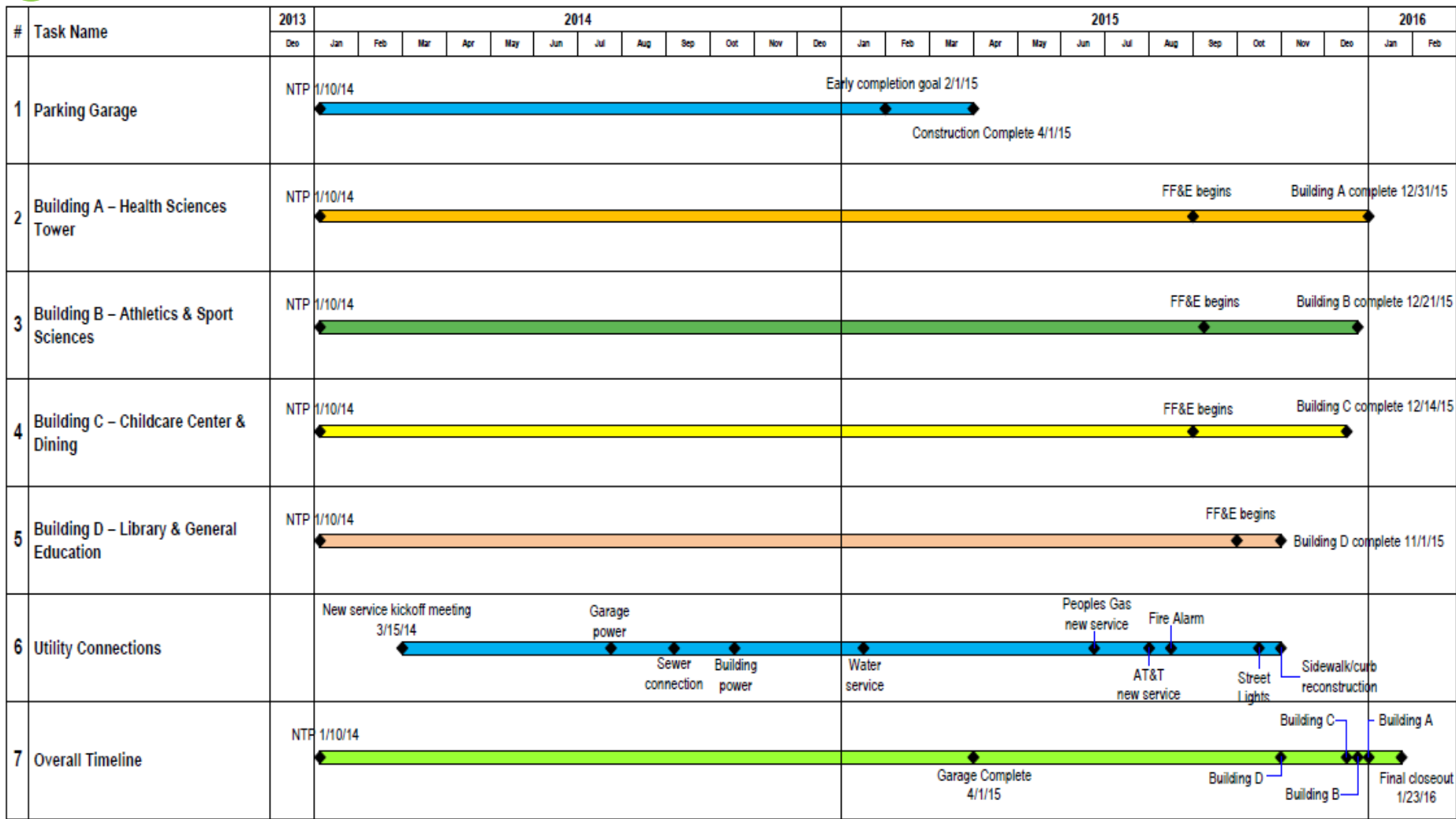
FFE Item	Scope Confirmation (OHC)	Procurement Recommendation Presented to the Board of Trustees (CCC)	Manufacture Lead-Time (Supplier)	Delivery/Install (Supplier)
Automotive Tools	September	January 2015	Stock	August 2015
Supply Chain Management/Central Store	Complete	February 2015	Stock	August 2015
Furniture	November	March 2015	8-12 Weeks	August 2015
Foodservice	November	March 2015	Stock	August 2015
IT and A/V	In Progress	Estimate: March 2015	Stock	August 2015

Today's Agenda

- 1 Introduction
- 2 OHC TDL Center Construction Update—CCC/FGM
- 3 **MXC Project Management/Utility Relocation Update—CCC/Jacobs**
- 4 Community Affairs Plan—CCC
- 5 MXC Architect Update—MNI
- 6 General Contractor Update - CMO
- 7 Q & A Session

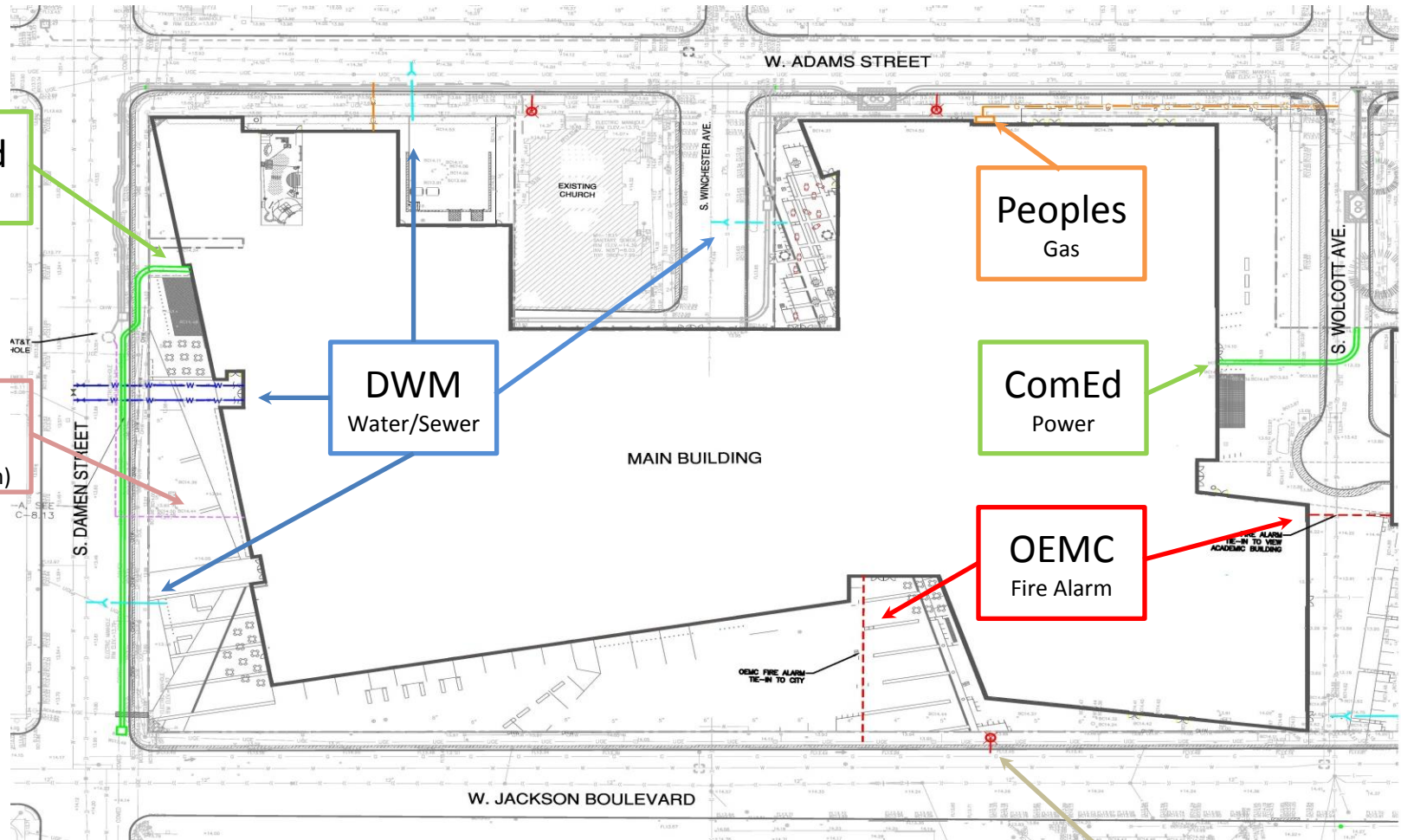
Next Construction Update Meeting: December 16th at 1:00pm

CCC remains on track, during the physical construction phase, to deliver the project by December 2015.





Phase II Utility Relocation & Utility Supply to MXC

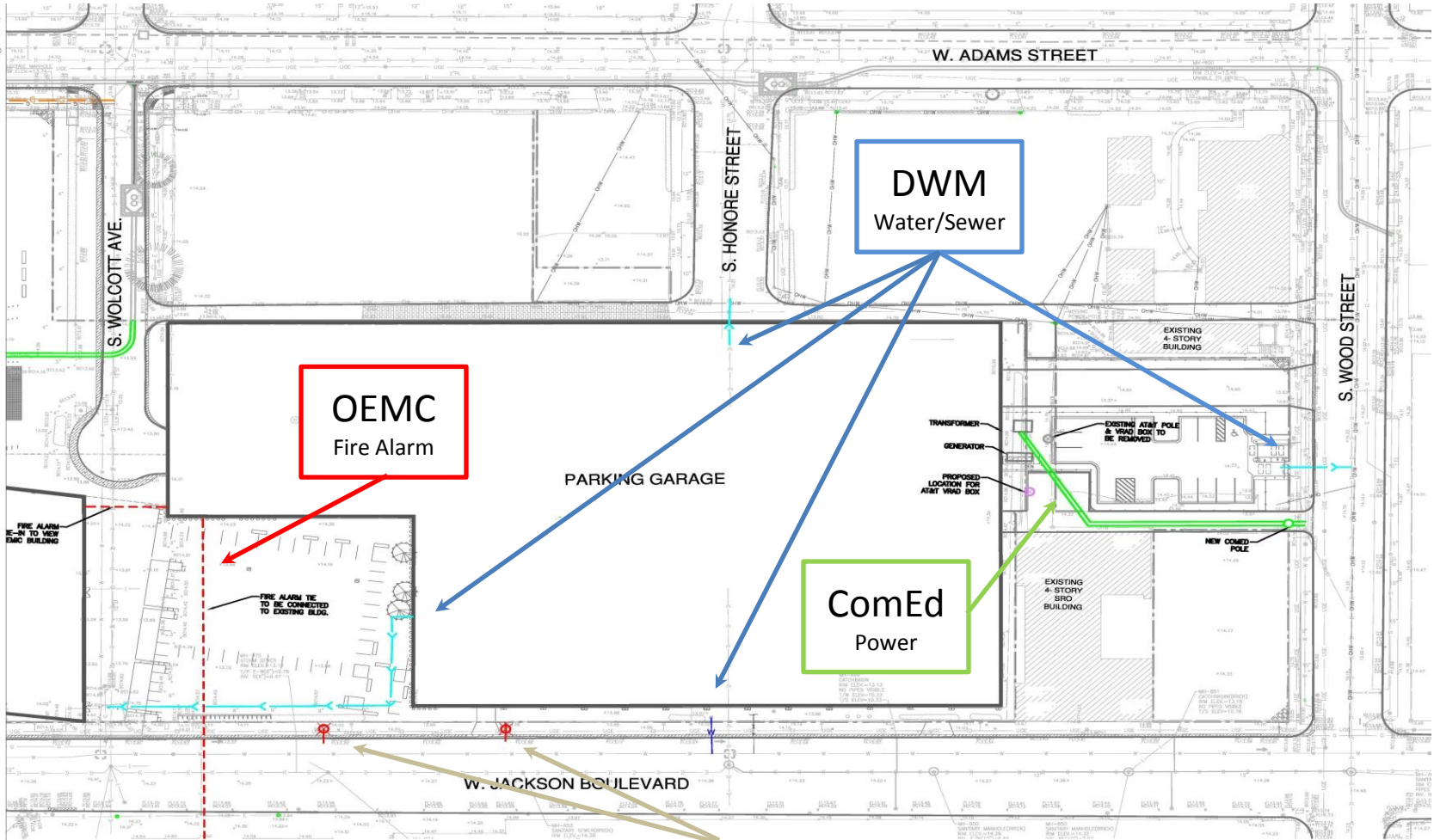


- ComEd – complete install in October
- Fiber install, coordination continues, Spring 2015 install
- DMW/CMO - water line complete this week, storm is now complete
- Peoples Gas - first phase install starting 8/28, completion in November
- OEMC – coordination continues, Summer 2015 install
- CDOT – Street lights removed on Jackson

CDOT
Street Light
Relocation



Phase II Utility Relocation & Utility Supply to MXC



CDOT
Street Light
Relocation

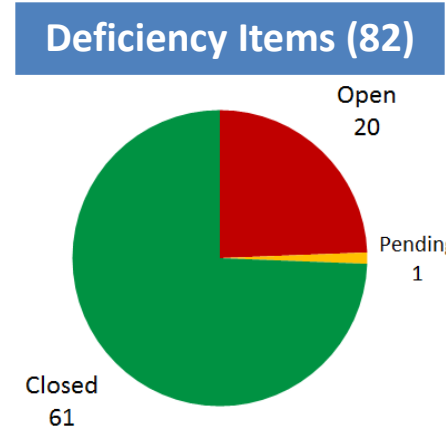
- DMW/CMO - water line install in September, storm is now complete
- OEMC – coordination continues, Fall 2014 install
- CDOT – Street lights removed on Jackson

Quality Assurance / Quality Control



A comprehensive QA/QC program has been established for the MXC project to ensure the building is built according to the required specifications and in accordance with the strict quality standards that have been established for the project.

MXC Project Deficiency Log	
Status	
Closed	74%
Open	24%
Open/Pending	2%

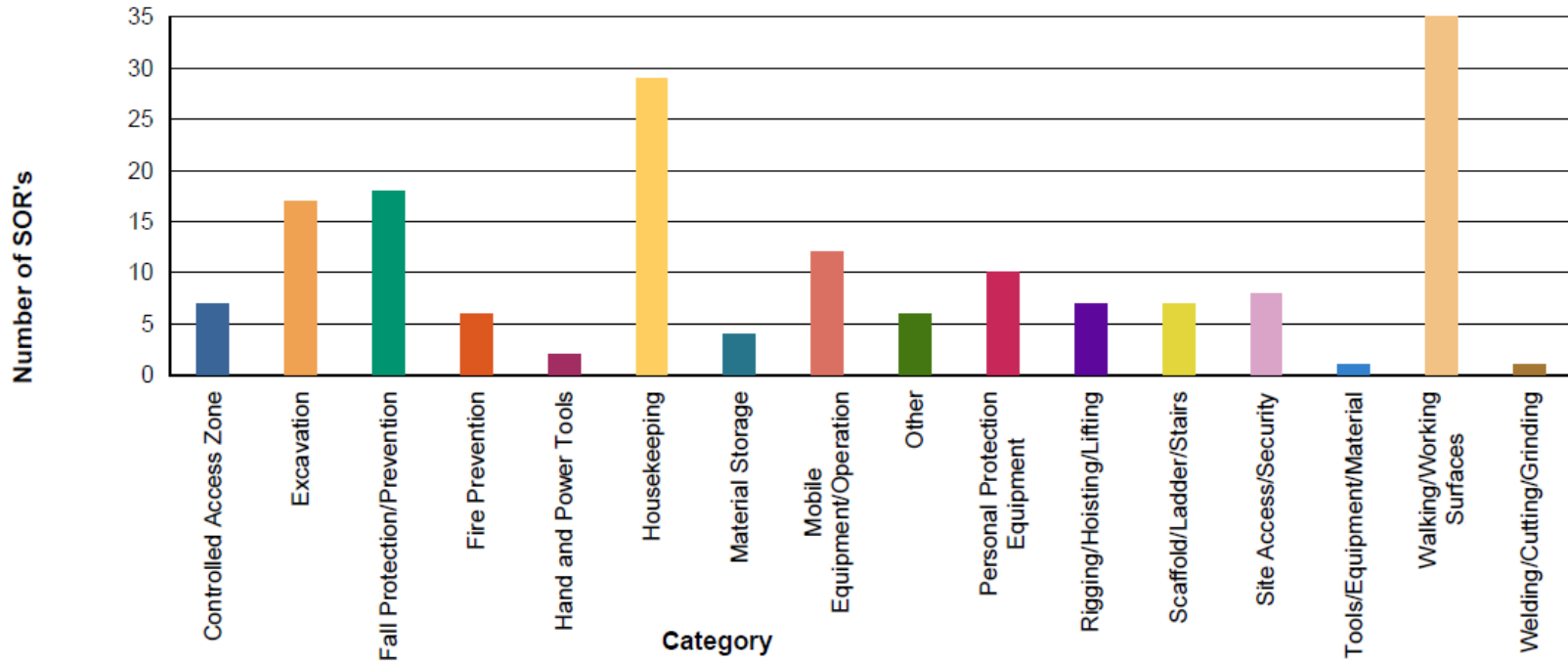


Responsible Party	QA/QC Activity	Frequency
CMO JV – Contractor	On-site Quality Control and Management	Daily
MNI – Architect	Design validation observations	Weekly & As Needed
Jacobs – Construction Manager	On-site Quality Assurance	Daily
CCC Project Management Team	On-site Quality Assurance oversight	Daily/Weekly
CCC Testing & Inspection Consultants	Verification of congruence with all required specifications	Daily & As Needed



Jacobs Safety Observation Report (SOR)

Jacobs performs safety observations as part of daily site walks. These SORs are shared with CMO to address accordingly with their subcontractors. Jacobs and CMO are working collaboratively on increasing safety awareness and addressing concerns identified onsite.



Jacobs SOR Log	
Status	
Closed	171
Open	5

Onsite Incidents	
Lost Time Accidents (LTAs)	0
Recordable Incidents	13
First Aid Incidents	8

Today's Agenda

- 1 Introduction
- 2 OHC TDL Center Construction Update—CCC/FGM
- 3 MXC Project Management/Utility Relocation Update—CCC/Jacobs
- 4 Community Affairs Plan—CCC
- 5 MXC Architect Update—MNI
- 6 General Contractor Update - CMO
- 7 Q & A Session

Next Construction Update Meeting: December 16th at 1:00pm

MXC Diversity Commitments to Date

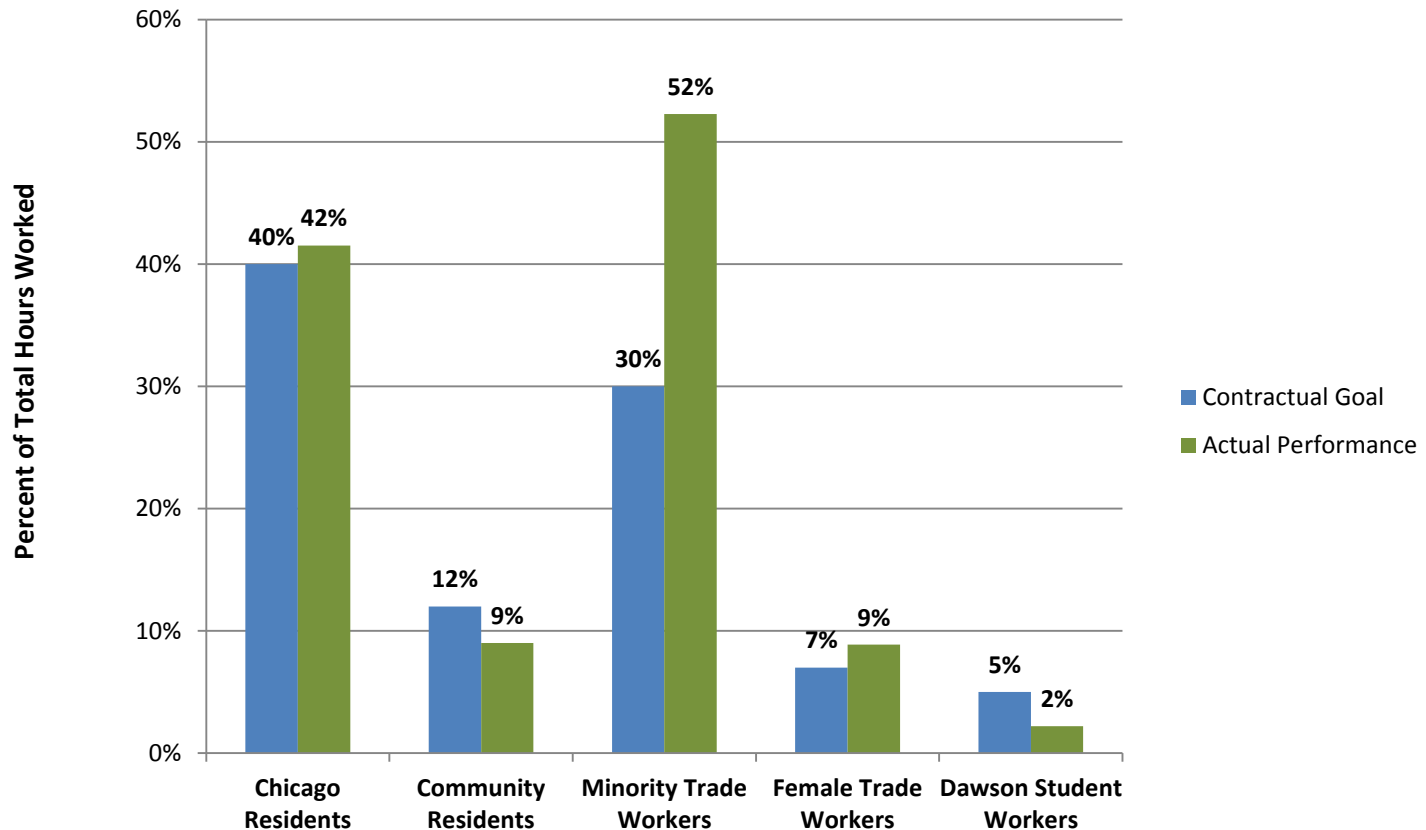
Committed Participation To Date	AOR--Moody Nolan	CM--Jacobs (phase 1)	CM--Jacobs (phase 2)	Site Prep--FH Paschen	GC--CMO (approved packages only)	Total all Primes Commitments to date	Percent of Total Commitments To Date
Total Commitments to date	\$12,000,000	\$2,451,000	\$7,067,000	\$1,033,550	\$166,971,969	\$189,523,519	
Total Chicago Firm Committed to Date (all firms including but not limited to M/WBE)	\$11,359,200	\$2,363,000	\$7,067,000	\$980,128	\$40,771,861	\$62,541,189	33.00%
Total MBEs Committed To date	\$7,716,000	\$612,750	\$1,766,750	\$525,674	\$62,271,687	\$72,892,861	38.46%
Total African American Committed to date*	\$4,488,000	\$58,824	\$1,060,050	\$56,652	\$33,423,068	\$39,086,594	20.62%
Total Hispanic Committed to date	\$0	\$56,373	\$706,700	\$525,674	\$6,545,000	\$7,833,747	4.13%
Total Asian Committed to date	\$2,604,000	\$561,854	\$0	\$0	\$514,039	\$3,679,893	1.94%
Total WBE Committed to date	\$2,406,000	\$181,769	\$706,700	\$79,575	\$10,142,450	\$13,516,494	7.13%

**Total M/WBE Commitments to Date: \$86,409,355
(46% of Total Commitments to Date)**

- * African American participation includes African American MBE and WBE firms
- Commitments include amounts paid to date and other commitments from all identified contractors (e.g., CMO approved packages, funds not yet paid to Moody Nolan, Jacobs etc.)

To date, the community hiring achievement on the Malcolm X construction project is as follows

MXC Construction Project Community Hiring Plan Performance (through week ending 8/22/2014)



Based on analysis of certified payroll hours (104,429) reported from September 3, 2013 to week ending, August 22, 2014. (Includes both the Site Prep contract and the GC contract.)

Today's Agenda

- 1 Introduction
- 2 OHC TDL Center Construction Update—CCC/FGM
- 3 MXC Project Management/Utility Relocation Update—CCC/Jacobs
- 4 Community Affairs Plan—CCC
- 5 MXC Architect Update—MNI
- 6 General Contractor Update - CMO
- 7 Q & A Session

Next Construction Update Meeting: December 16th at 1:00pm

“BRANDING/STUDENT GPS” (Design Sequence)

Visioning Session – 04/23/2014: Kick-off/Work Session #1

Branding and Signage Plan Refinement Meeting – 05/7/2014: Work Session #2

Strategy & Campus Solutions Integration Meeting (06/3/2014):

Concept Meeting #3 (Late-June 2014):

Digital Design Concepts (Mid/Late-July 2014): Conference Call/WebEx

- MNI to present Digital Signage/Kiosks/Screen options as a value enhancement to the current design direction

Ongoing Considerations (Sep 2014):

- Garage Signage/Graphics/Way-finding to somehow integrate into overall design concept
- Iconography to be finalized with CCC/MXC stakeholders
- Awaiting streamlined Career Map for final graphic wall design

This Presentation (Sep 2014):

- **Garage Signage/Graphics integrated into design.** Chancellor’s First look at Garage Level branding concept

Chancellor Presentation (Oct 2014):

- Final “GPS” concept, branding features, and signage and way-finding. Final iconography & streamlined Career Map resolved by CCC/MXC. Final Garage Signage/Graphics concept. Hand-off to CCC Strategy & Marketing for *Final Artwork/Content Selection Phase*

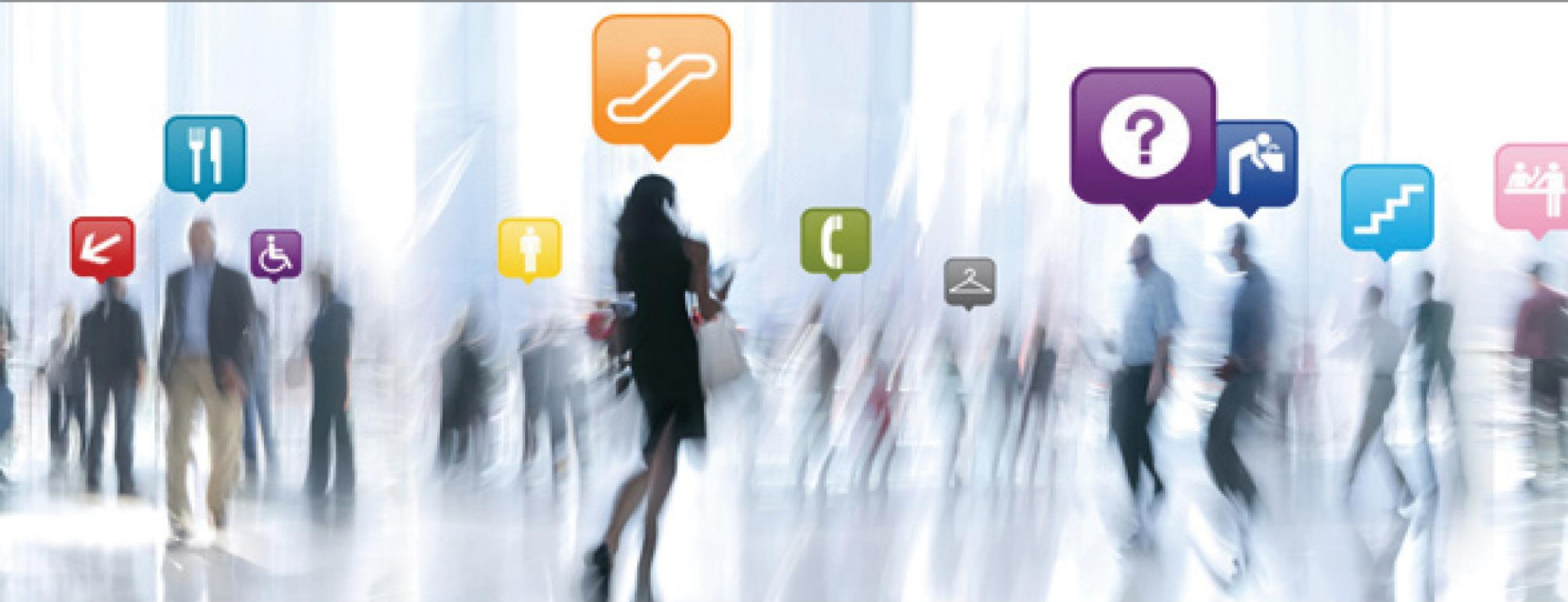
****Artwork/Content Selection Phase Proceeds through February 2015****



CITY COLLEGES of CHICAGO
Malcolm X
Education that Works

CAREER PATH

DIGITAL SIGNAGE 1



MOODY•NOLAN
RESPONSIVE ARCHITECTURE

GOAL OF DIGITAL ROOM SIGNAGE COMPONENTS



ADA ROOM SIGN

Signage component will have to have an integrated ADA placard.



ROOM SCHEDULE

Sign can display room or class schedule information.



VIDEO FEED

Sign can link to class live feed for viewing.



REAL-TIME PATH PORTAL INFO

Sign will display the icon of the class that's in session.

It could also give first level additional information about that career path.



TYPES OF DIGITAL ROOM SIGNAGE

OPEN FRAME TOUCH SCREEN CPU

The open frame touch screen is the most flexible type of unit for a digital component signage system. We would design the ADA signage component custom to incorporate the screen. The screen and CPU operate on Windows so your IT department can design with no restrictions or annual software fees. Its design can have the same look and feel that you can achieve with the iPad without the OS platform.



OVERVIEW

100 SCREENS / INSTALL COST: \$115,000.00

PROGRAMMING COSTS: None (Work is done internally)

SIGN DESIGN: Complete flexibility of design

CONTENT FLEXIBILITY: Complete flexibility of design

ANNUAL CHARGES: None



EXAMPLE CONCEPT

iPAD OR OPEN FRAME TOUCH SCREEN



EXAMPLE CONCEPT OFF THE SHELF SCHEDULER SCREEN

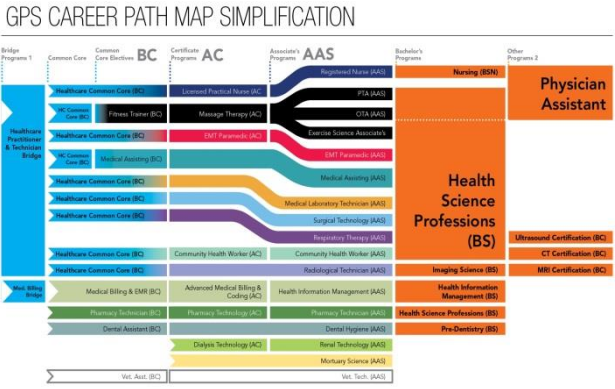


“BRANDING/STUDENT GPS” (Bringing It Home!)

1. CCC/MXC Approves Program/Signage “Iconography”



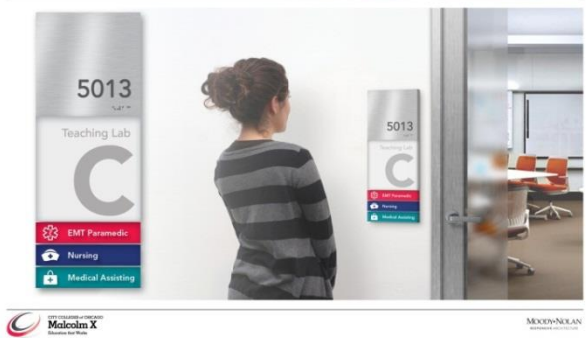
2. CCC/MXC Finalizes “Pathways” Map



“BRANDING/STUDENT GPS” (Bringing It Home!)

3. Final Design of Static Display Elements (“Pathways” Wall & *Room ID Signage w/ Integrated Iconography – Content Approval & Career Map by CCC/MXC

CREATING TOOLS FOR THE SYSTEM (Additive signage pathway components)



CREATING TOOLS FOR THE SYSTEM (Wall Displays)



4. Final Design Platform for Digital Static & Digital Interactive Displays (Wall Kiosks & Room ID Signage – Content by CCC/MXC

CREATING TOOLS FOR THE SYSTEM (Interactive Kiosks)



EXAMPLE CONCEPT
IPAD OR OPEN FRAME TOUCH SCREEN



Procurement/Installation Milestone Schedule

FFE Item	Scope Confirmation (MNI/CCC)	Procurement Status	Recommendation Presented to the Board of Trustees (CCC)	Delivery/Install (CMO/Supplier)
Food Service	Complete	Bids Received – Evaluation In-Progress (M/WBE Review)	Aug 2014	Aug 2015
Fume Hoods	Complete	Out For Bid	Oct 2014	Aug 2015
Garage Vehicular Access Control	Complete	Out For Bid	Oct 2014	Jan 2015
Lab Equipment	Complete	Out For Bid	Oct 2014	Aug 2015
Exercise Sports Science Equipment	Complete		Dec 2014	Dec 2015
Laundry Equipment	Complete	Procurement Docs In-Progress	Below \$25,000	Oct 2015
*Pathways, Branding, & Signage	Sep 2014	MNI Concept Design In-Progress	Fall 2014	Jan 2015 (Garage); Oct 2015 (Academic Bldg.)
Furniture & Window Treatment	Nov. 2014	MNI Final Specs In-Progress	Jan 2015	Sep 2015
Athletic Equipment	Complete		Summer 2015	Dec 2015

*** Garage signage must be ready by January 2015 for February 2015 installation**

Garage Precast Concrete (Rendering)



Depiction of the Precast Panel for the Parking Garage



Elevator Cab Design (Alternate Design)

ELEVATOR DESIGN STUDIO



A FORMS+SURFACES DESIGN TOOL

MALCOLM X - ELEVATOR INTERIOR #2

LEVELe-104 CONFIGURATION: Each wall is comprised of horizontal panels. Two frame designs allow a variety of materials, including glass. LEVELe-104 accommodates front and front & rear elevator openings.

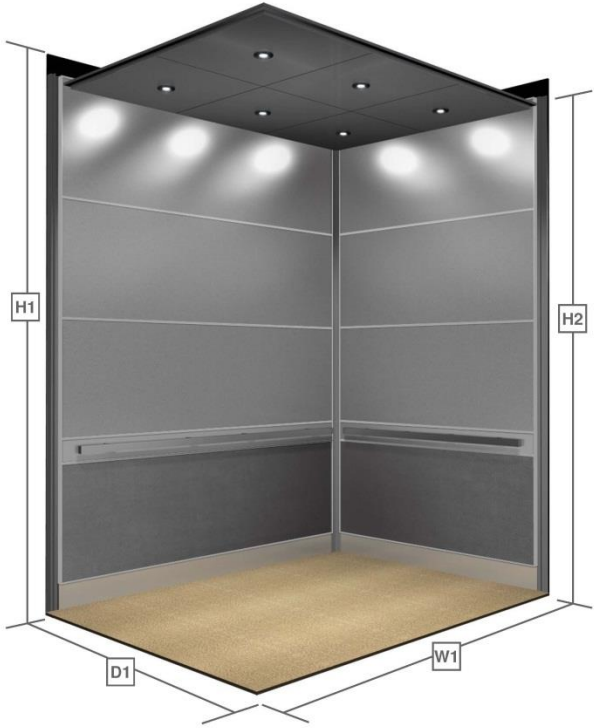
Configuration
LEVELe-104

Opening Option
Front

Dimensions
D1:
W1:
H1:
H2:

Additional Details
Job Type:
Elevator Type:
Cab Shell Material:
Manufacturer:
Elevator Capacity:
Quantity: 1

Comments:



T 1.800.451.0410 | F 412.781.7940 | www.forms-surfaces.com
© 2014 Forms+Surfaces® | All dimensions are nominal. Specifications and pricing subject to change without notice. For the most current version of this document, please refer to our website at www.forms-surfaces.com

ELEVATOR DESIGN STUDIO



A FORMS+SURFACES DESIGN TOOL

MALCOLM X - ELEVATOR INTERIOR #2

CONFIGURATION OVERVIEW

- A** Panel A
Stainless Steel with Diamond finish
- B** Panel B
Bonded Aluminum with Dark Patina and Austin pattern
- C** Panel C
Stainless Steel with Diamond finish
- D** Handrail Panel
Stainless Steel with Seastone finish
- E** Base
Stainless Steel with Seastone finish
- F** Panel Frames
LEVELe-104 Panel Frame Color: Aluminum, Clear Anodized
- G** Corner Reveals
LEVELe Corner Reveals Color: Aluminum, Clear Anodized
- H** Handrails
RECTANGULAR Handrail: Rail in Satin Stainless Steel
- I** Ceiling
Stainless Steel with Satin finish



T 1.800.451.0410 | F 412.781.7940 | www.forms-surfaces.com
© 2014 Forms+Surfaces® | All dimensions are nominal. Specifications and pricing subject to change without notice. For the most current version of this document, please refer to our website at www.forms-surfaces.com



Elevator Cab Design (Alternate Design)

ELEVATOR DESIGN STUDIO

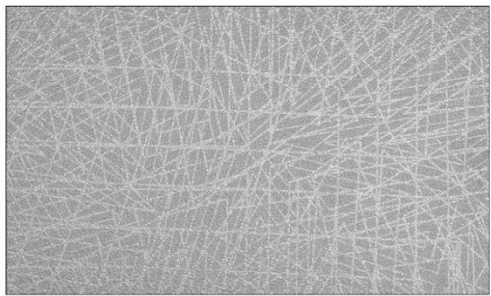


A FORMS+SURFACES DESIGN TOOL

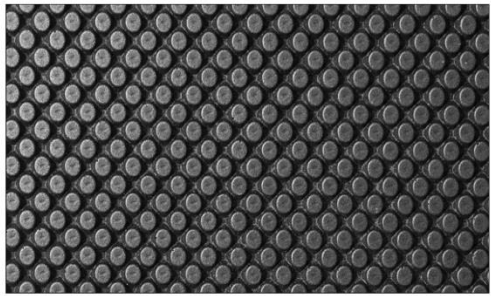
MALCOLM X - ELEVATOR INTERIOR #2

DESIGN & MATERIAL DETAILS

Panel A
Material: Stainless Steel
Finish: Diamond
Pattern: No Pattern



Panel B
Material: Bonded Aluminum
Patina: Dark
Pattern: Austin



T 1.800.451.0410 | F 412.781.7940 | www.forms-surfaces.com
© 2014 Forms+Surfaces® | All dimensions are nominal. Specifications and pricing subject to change without notice. For the most current version of this document, please refer to our website at www.forms-surfaces.com

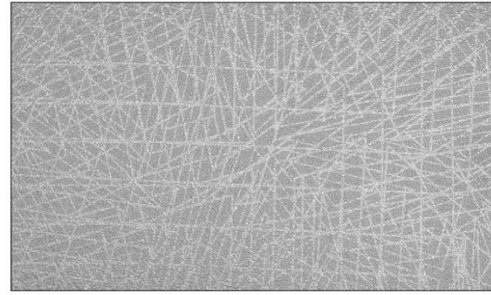
ELEVATOR DESIGN STUDIO



A FORMS+SURFACES DESIGN TOOL

MALCOLM X - ELEVATOR INTERIOR #2

Panel C
Material: Stainless Steel
Finish: Diamond
Pattern: No Pattern



Handrail Panel
Material: Stainless Steel
Finish: Seastone
Pattern: No Pattern



T 1.800.451.0410 | F 412.781.7940 | www.forms-surfaces.com
© 2014 Forms+Surfaces® | All dimensions are nominal. Specifications and pricing subject to change without notice. For the most current version of this document, please refer to our website at www.forms-surfaces.com



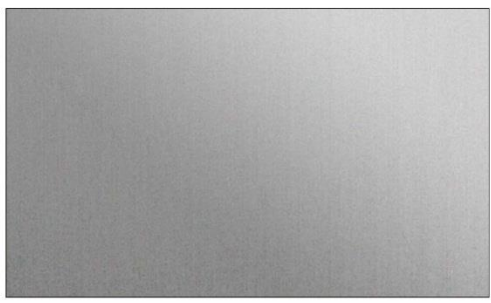
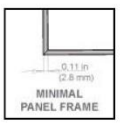
Elevator Cab Design (Alternate Design)

MALCOLM X - ELEVATOR INTERIOR #2

Base
 Material: Stainless Steel
 Finish: Seastone
 Pattern: No Pattern

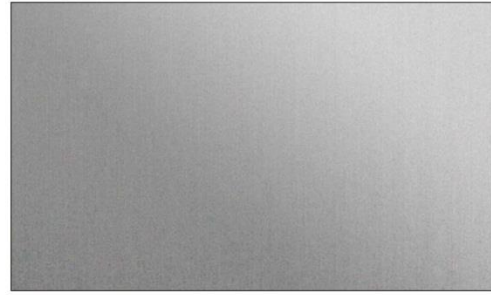


Panel Frames
 Material: Aluminum
 Color : Clear Anodized
 Style: Minimal

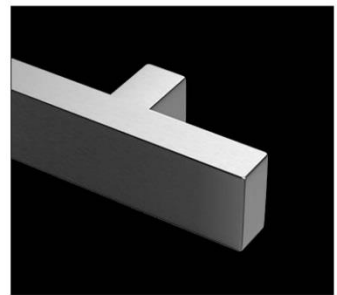


MALCOLM X - ELEVATOR INTERIOR #2

Corner Reveals
 Material: Aluminum
 Color : Clear Anodized



Handrails
 Series: RECTANGULAR
 Rail Material: Stainless Steel
 Rail Finish: Satin
 Rail Option: 1" W X 2" H



Elevator Cab Design (Alternate Design)

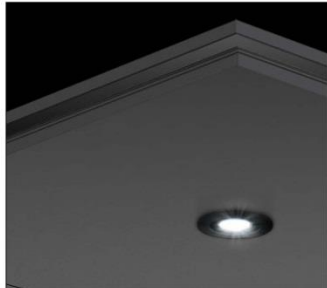
ELEVATOR DESIGN STUDIO



A FORMS+SURFACES DESIGN TOOL

MALCOLM X - ELEVATOR INTERIOR #2

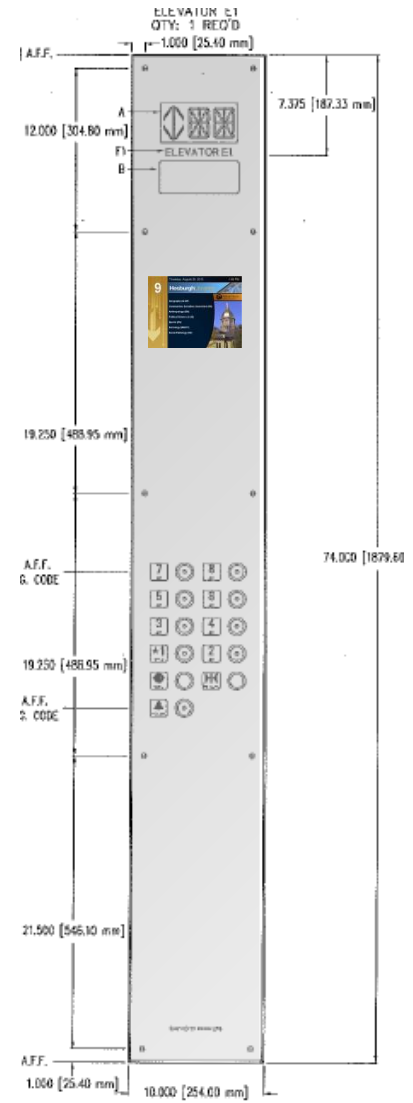
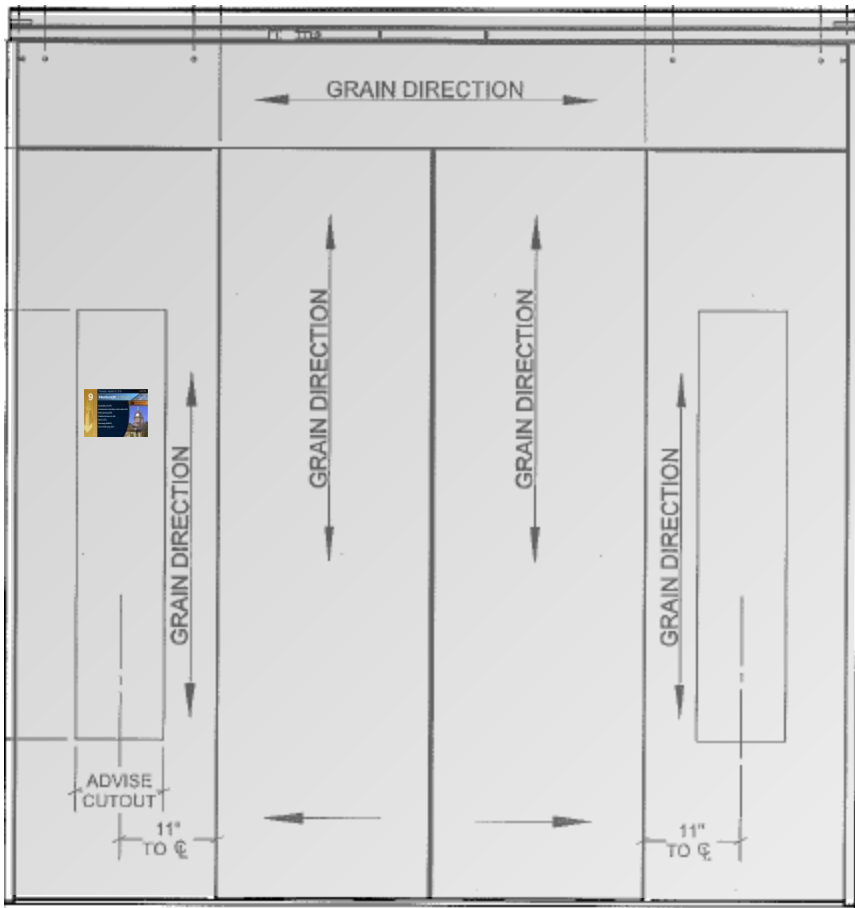
Ceiling
Material: Stainless Steel
Finish: Satin
Lighting: 6 LED downlights



T 1.800.451.0410 | F 412.781.7840 | www.forms-surfaces.com
© 2014 Forms+Surfaces® | All dimensions are nominal. Specifications and pricing subject to change without notice. For the most current version of this document, please refer to our website at www.forms-surfaces.com



Elevator Cab Design (Digital Display)



Elevator Cab Design (Digital Display – Sample Content)

Thursday, August 26, 2010 1:45 PM

9

Hesburgh Libraries

UNIVERSITY OF NOTRE DAME

Hesburgh Libraries
University of Notre Dame

- Geography (G-GF)
- Communism, Socialism, Anarchism (HX)
- Anthropology (GN)
- Political Science (J-JQ)
- Sports (GV)
- Sociology (HM-HT)
- Social Pathology (HV)

Cleveland Clinic

Ranked one of the top three hospitals in the nation by U.S. News & World Report 2006

Look, a big blue rectangle!
Everyday moments can be learning moments with your kids.

www.bornlearning.org

DIRECTION:

FLOOR:
1

http://www.ccelectronics.com/index.php?option=com_content&view=category&id=55:elite-pi&Itemid=66

*** Final Content to be coordinated with Branding/Signage Design and CCC Marketing/Communications**

Conference Center Lighting (Current Fixture – Causes Sprinkler Interference)



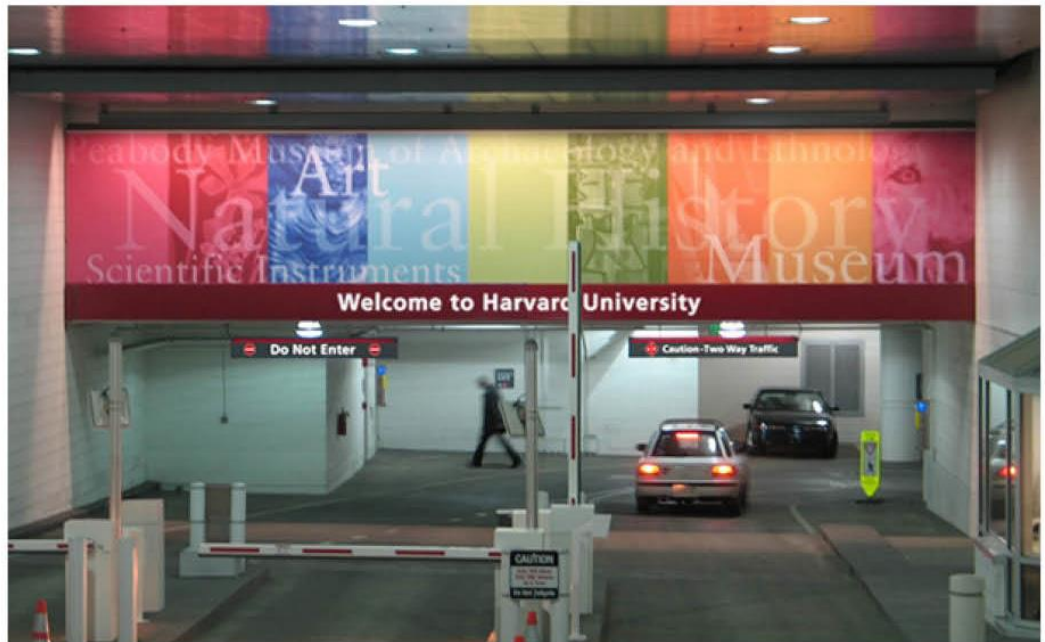
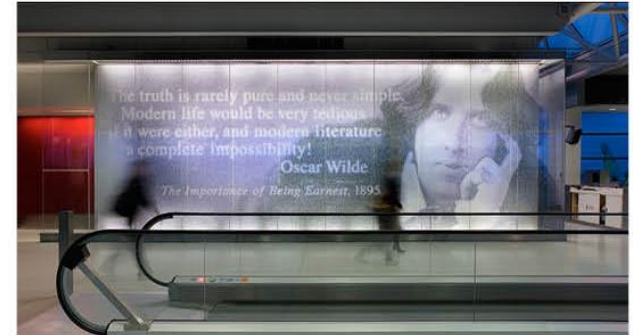
Conference Center Lighting (Proposed Option 1 – “Single-Halo” = \$92,000 savings)



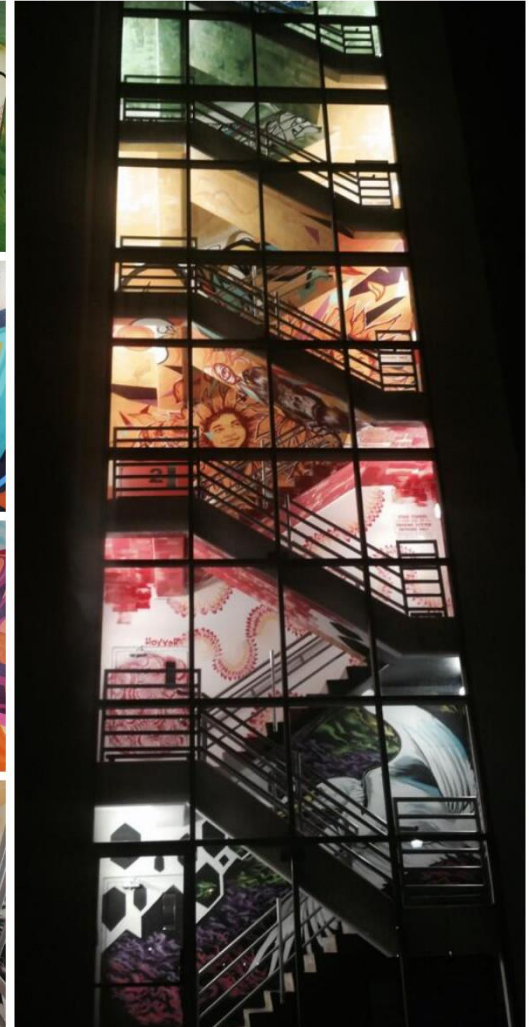
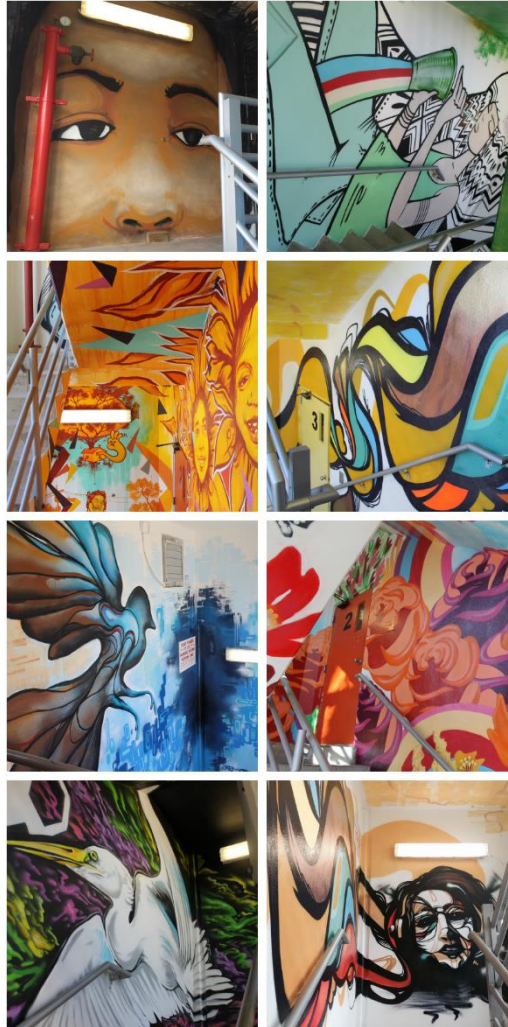
Precedents: TEXT & NUMBER GRAPHICS



Precedents: GRAPHICS AND NUMBERS



Precedents: STAIRWELL COLOR & ART



Precedents: ELEVATOR LOBBIES



LEVEL DESIGNATION

6 Elizabeth Blackwell

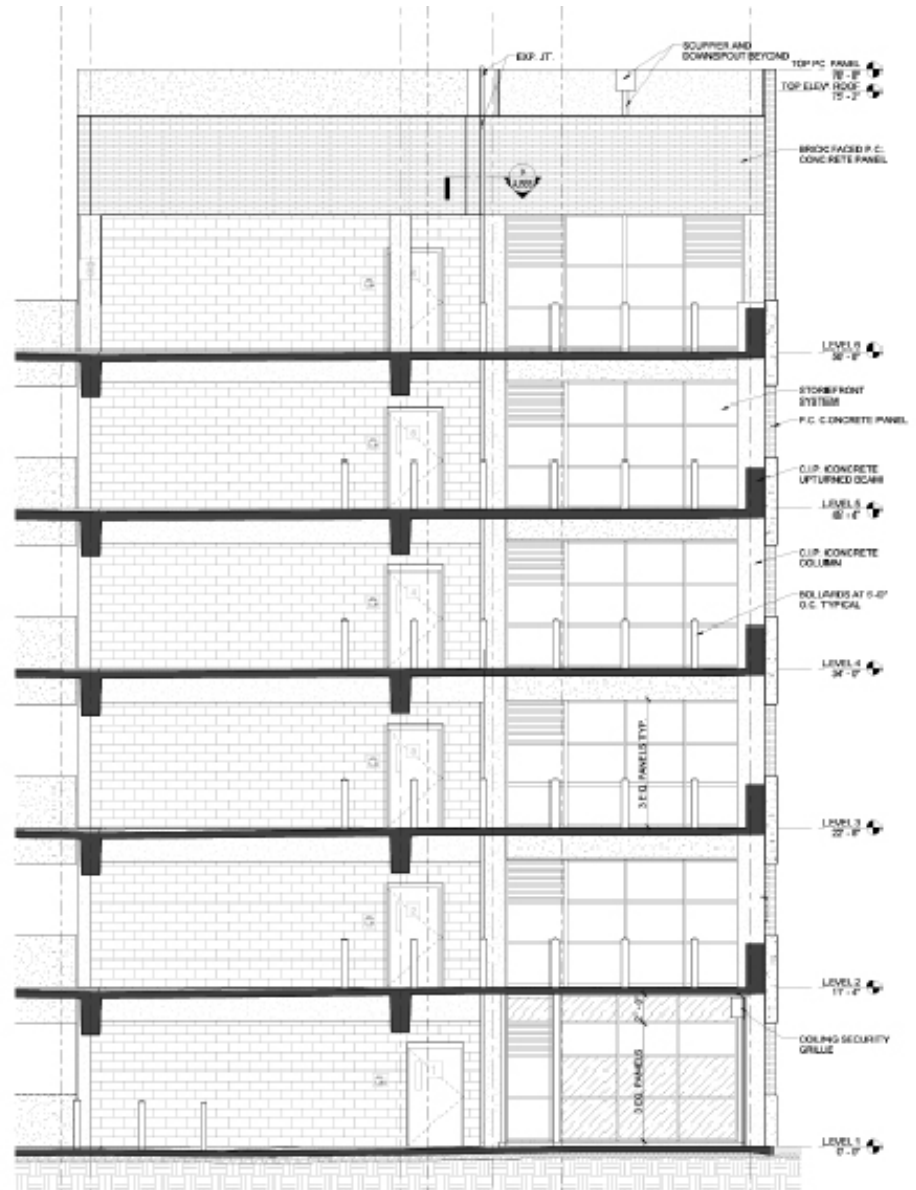
5 Dr Daniel Hale Williams

4 Regina M. Benjamin

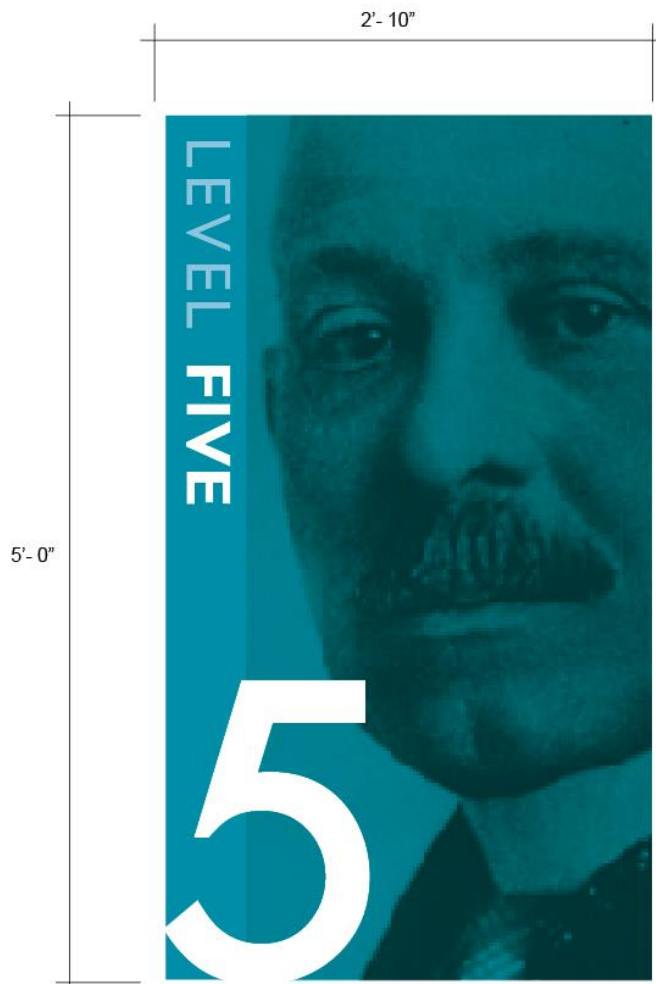
3 James McCune

2 Mary Eliza Mahoney

1 Benjamin S. Carson, Sr.



LEVEL ID



COLUMN LEVEL ID (Option 1)



ALUMINUM PANEL WITH
APPLIED VINYL GRAPHICS.

COLUMN BACKGROUND TO
BE PAINTED



COLUMN LEVEL ID (Option 2)



PAINTED COLUMN WITH
APPLIED VINYL GRAPHICS

GRAPHICS TO BE ADDED TO
OVERHEAD BEAM



ELEVATOR LOBBY & STAIR LAYOUT



Today's Agenda

- 1 Introduction
- 2 OHC TDL Center Construction Update—CCC/FGM
- 3 MXC Project Management/Utility Relocation Update—CCC/Jacobs
- 4 Community Affairs Plan—CCC
- 5 MXC Architect Update—MNI
- 6 General Contractor Update - CMO
- 7 Q & A Session

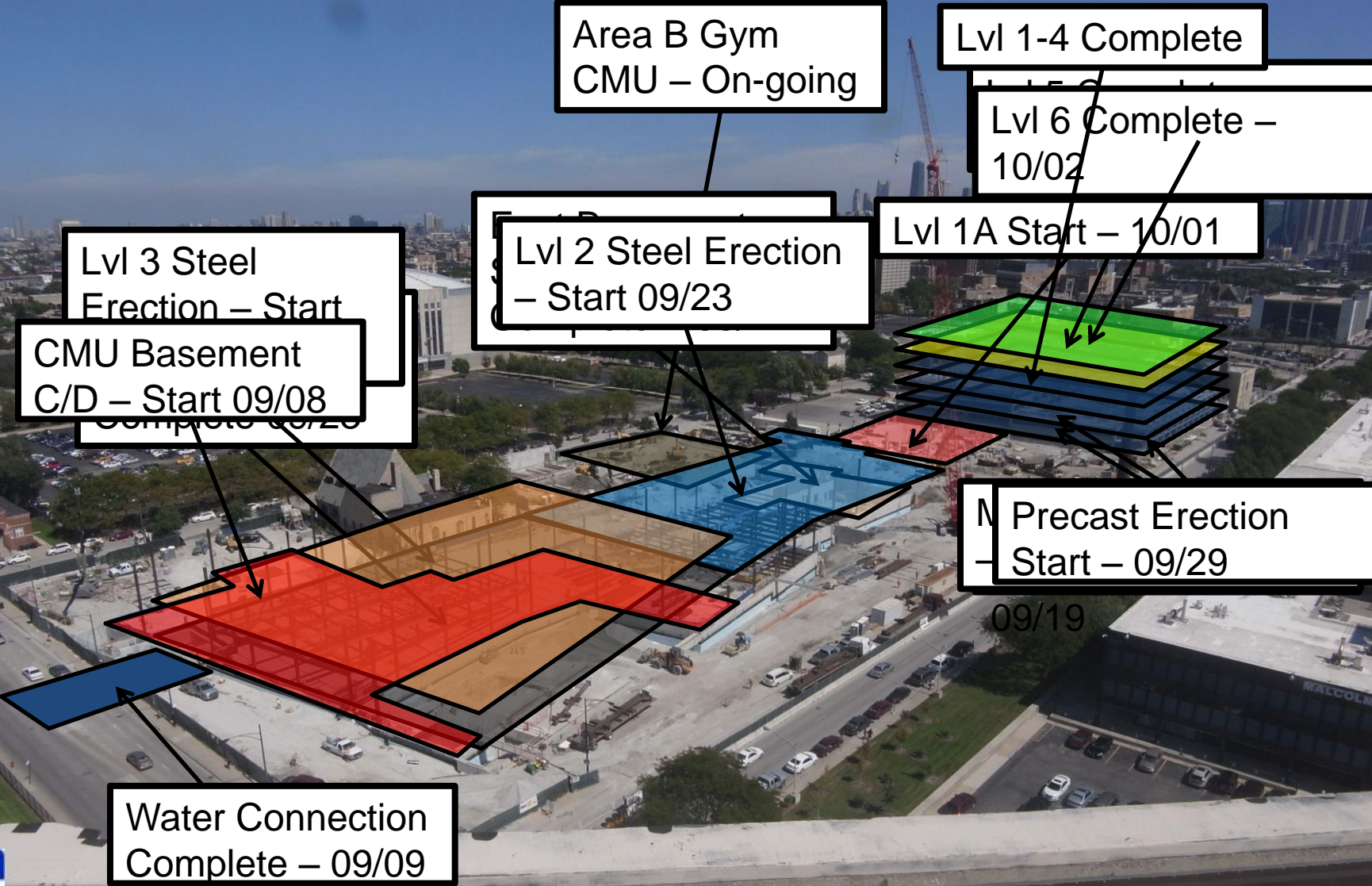
Next Construction Update Meeting: December 16th at 1:00pm

Lookahead Schedule Milestones

1. Resume Level 2 Steel Framing West 09.12.14
2. Start Spray Fireproof West Basement 09.15.14
3. Start Level 2 Steel Framing East 09.23.14
4. Start SOMD East Basement 09.23.14
5. Start Level 3 Steel Framing West 09.29.14
6. Start MEP OH West Basement 10.13.14

7. Complete Tower B – PG 5th Deck 09.11.14
8. MEP OH/CMU Lvl 1 Complete 09.19.14
9. Start Precast Erection 09.29.14
10. Start Tower A – PG 1st Deck 10.01.14
11. Complete Tower B – PG 6th Deck 10.02.14
12. MEP OH/CMU Lvl 2 Complete 10.10.14

CMO – Lookahead Schedule – The New Malcolm X College



1st SOG Pour – Academic Building



Academic Building – Area B Foundations



Academic Building – Prep for Steel Erection



Academic Building – Start of Steel Erection



8AM MONDAY 7/21



2PM THURSDAY 7/24



Confidential - For Discussion Purposes Only

9/17/2014

Academic Building – Area C/D SOMD



08/22/2014 13:07

Academic Building – Area A/B





Construction Progress Photos – Academic Building





Construction Progress Photos – Academic Building



Academic Building – Area D



08/22/2014 13:21

Academic Building – Lower Level (Basement) – Area C/D





Construction Progress Photos – Academic Building



Parking Garage Progress Photos



07/21/2014 06:51

Stormtrap 6 Installation @ Wood St.



Parking Garage Progress Photos



08/26/2014 10:08



Construction Progress Photos – Parking Garage





Construction Progress Photos – Parking Garage



Initiative Update

- **4 Individuals Placed from Intern List with CMO and Trades:**
 - 1. Anthony Sheppard**
 - 2. Malcolm Boyd**
 - 3. Omar Valasquez**
 - 4. Sabryna King-Bell**

Initiative Update

- **Additional 7 Individuals placed from Dawson Tech Cohort List with CMO and Trades as either Apprentice or Intern:**
 - 1. Brenda Gantt**
 - 2. Ray Carter**
 - 3. Robert Minor**
 - 4. Nickesha Hargrove**
 - 5. Nathan Ashford**
 - 6. Karl Bullock**
 - 7. Dionte Chew**

Initiative Update

- **Alexander, Ross & Associates Outreach to Project Community Candidates / Information Session:
September 25, 2014**
- **Interview & Hiring Event for Subcontractor Placement of Community Residents:
October 2014**

Project Intern Spotlight

- **IDOT Highway Career Construction Training Program (HCCTP) Commencement Speaker:
CMO Intern & IDOT HCCTP Graduate:
Sabryna King-Bell**



- **IDOT Employ Illinois
Program Announcement:
Dawson Technical Institute**



Community Service Update

Thank you for your support!

Jobsite Clothing Drive for Jesse Brown Veterans Hospital



Today's Agenda

- 1 Introduction
- 2 OHC TDL Center Construction Update—CCC/FGM
- 3 MXC Project Management/Utility Relocation Update—CCC/Jacobs
- 4 Community Affairs Plan—CCC
- 5 MXC Architect Update—MNI
- 6 General Contractor Update - CMO
- 7 Q & A Session

Next Construction Update Meeting: December 16th at 1:00pm